

Large Item COLLECTION GUIDELINES

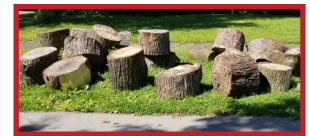
ACCEPTED

- Furniture & Household Items**
 Couch, chair, table, buffet, bed dresser, box spring, mattress, floor lamp, crib, playhouses, carpet roll, etc.
- Metal Items**
 Washers, dryers, stoves, hotwater tanks, bicycles, bed frames, etc.
- Tires**
 Up to 4 tires per household.
 Keep separate from other items.
- Tree Trimmings**
 Branches no more than 4 inches diameter or 4 feet long, tied into bundles, no more than 60 lbs.
 Separate from other items.
- All items must come from household where they are set out.**



NOT ACCEPTED

- Loose, Small Items**
 Dispose in weekly garbage or recycling collection.
- Hazardous Waste**
 Motor oil, batteries, paint, gasoline, antifreeze, light bulbs, or chemicals.
 Drop off at HazBin, 7501 Grade Lane
- Automotive Parts**
 Including boats, motorcycles, and mopeds.
- Construction and Demolition Waste**
 Lumber, drywall, cabinets, concrete, dirt, roofing material, toilets, sinks, flooring, etc.
 Some items may be donated to Habitat ReStore.
 Or dispose at 636 Meriwether Avenue (fees apply).
- Appliances containing Freon** (Drop off at 636 Meriwether Avenue.)
- Tree Stumps**



Piles marked with an X contain at least one unaccepted item.

Find your set out dates and sign up for reminders on the FREE Recycle Coach app!

Set out periods are Friday-Sunday, three times per year. Items are collected during the following week.

Large Item Collection is not a recycling program.

- Donate usable items to keep them out of the landfill.
- Drop off up to 3 large household items, up to 4 tires or recycle TVs and other electronics for free at the Waste Reduction Center, 636 Meriwether Avenue. Check website for hours.
- Set out qualifying tree and plant trimmings for yard waste collection instead - they'll be composted. Large piles and tree stumps may be dropped off at 636 Meriwether Avenue (fees apply).

Louisvilleky.gov/BulkyWaste

