

Has Your Facility Been Closed for Weeks?

Flush the Pipes.



Louisville Water remains committed to providing you with safe high-quality drinking water during the COVID-19 pandemic. The disinfectant we use to treat the water, chlorine, kills water-borne viruses. We deliver this water through a network of pipes and after the water flows through a meter, building owners are responsible for maintaining water quality. Flushing moves out the older water in the pipes and brings in fresh, high-quality water.

Who Should Flush

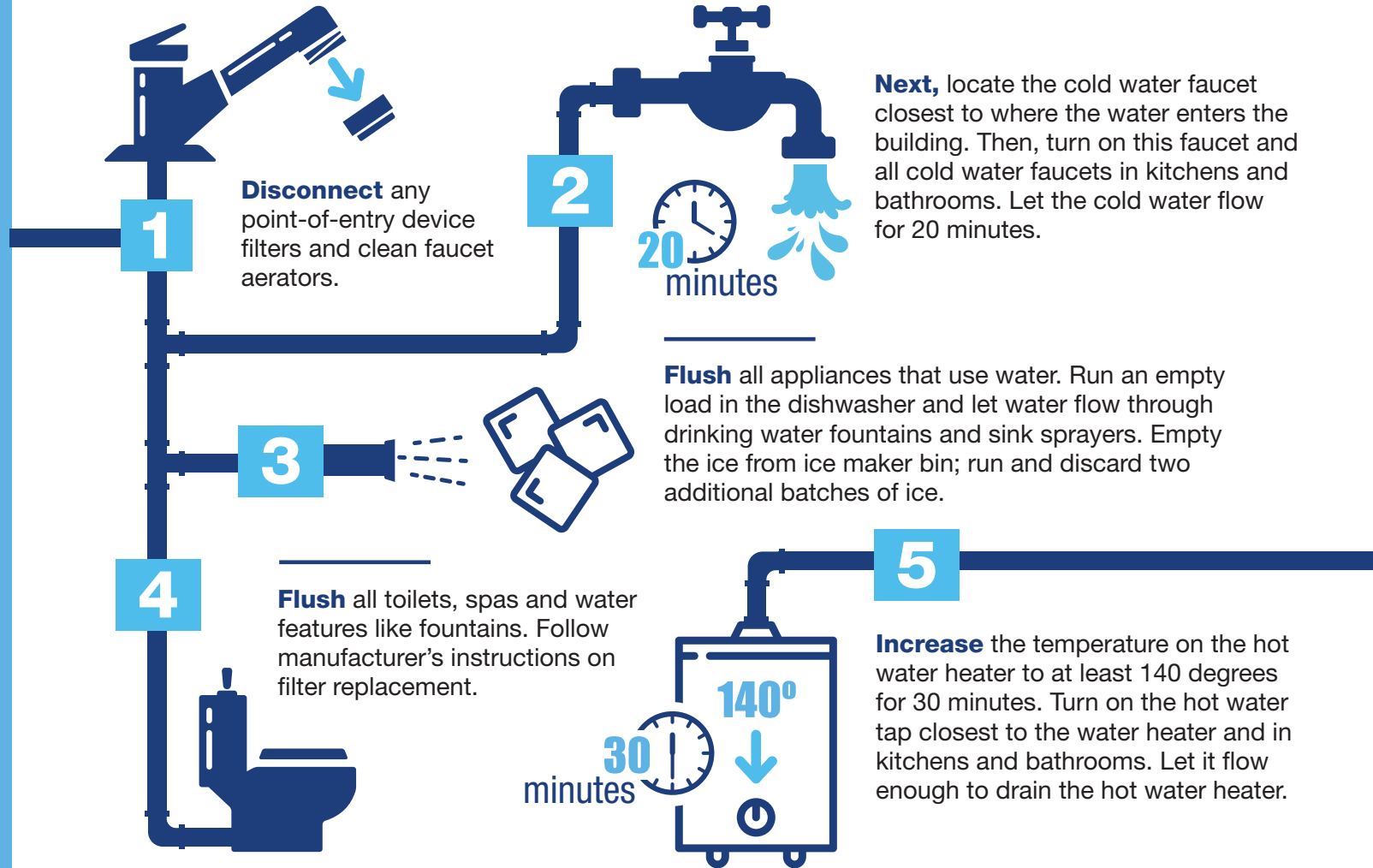
Any facility, school or office building that has been empty or under used.

What to Flush

All appliances that use water including faucets, drinking water fountains, kitchen sprayers, dishwashers, ice makers, toilets, hot water heaters, spas and water features such as fountains.

Louisville Water Company
550 South Third Street
Louisville, KY 40202

How to Flush Pipes



For more information on flushing your pipes go to LouisvilleWater.com/flushing.



After flushing, remember to turn off all faucets and reset the water heater.