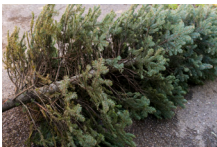
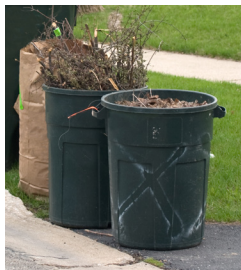


# Yard Waste

## COLLECTION GUIDELINES

### ACCEPTED

- **Leaves, twigs, straw, pine needles**
- **Shrubbery trimmings**
- **Branches & tree trimmings**  
2 inches diameter or less  
4 feet long or less
- **Wood ash**
- **Items must be contained or bundled**  
Reusable containers with handles  
Paper yard waste bags  
Compostable bags meeting ASTM D6400 standards  
Bundles tied with twine  
Containers and bundles no more than 60 lbs
- **Christmas trees (seasonally)**  
Remove all decorations  
No bag or container needed



### NOT ACCEPTED

- **Dirt, rocks & gravel**
- **Litter or trash from yard**
- **Plastic items**  
Including, but not limited to, flower pots, plant tags, empty mulch and soil bags
- **Large limbs and tree stumps**  
Larger than 2 inches diameter  
Longer than 4 feet
- **Wrong containers**  
Material may not be in city garbage or recycling carts  
Material may not be in plastic bags
- **Piles not contained or bundled**



**Set out Yard Waste by 6am on collection day.**

**Download the free Recycle Coach app!**

Find your set out dates, guidelines, sign up for reminders, and more!



[Louisvilleky.gov/YardWaste](http://Louisvilleky.gov/YardWaste)