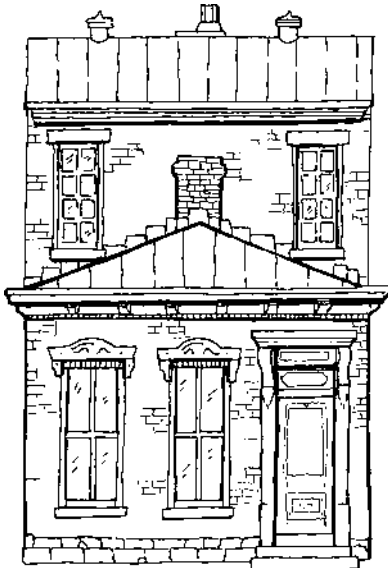


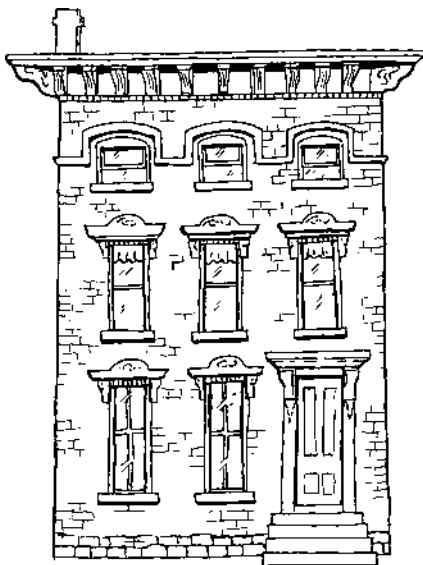
RESIDENTIAL

STYLE GUIDE

ITALIANATE



Shotgun House



Townhouse

CHARACTER-DEFINING FEATURES

- A. Low-Pitched Roof
- B. Tall, Narrow Windows
- C. Overhanging Eaves with Ornamental Brackets
- D. Decorative Lintels Above Windows and Doors

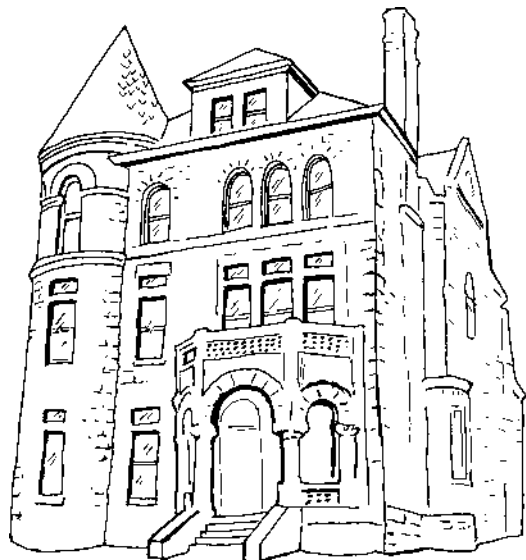
COLONIAL REVIVAL



CHARACTER-DEFINING FEATURES

- A. Symmetrically-Balanced Facade
- B. Pedimented Entry Porch
- C. Fanlight and Sidelights Around Door
- D. Multi-pane Glazing in Double-Hung Windows
- E. Dentiled Cornice

RICHARDSONIAN ROMANESQUE



CHARACTER-DEFINING FEATURES

- A. Asymmetrical Facade
- B. Rough-Faced Masonry Walls
- C. Rounded Arches Over Windows and Entrances
- D. Corner Towers with Conical Roofs

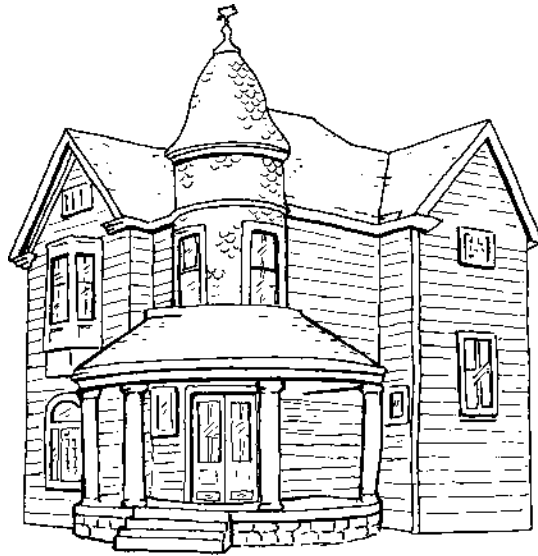
FOLK VICTORIAN



CHARACTER-DEFINING FEATURES

- A. Proportionally-Balanced Facade
- B. Similar to Queen Anne but Simpler in Form
- C. Spindework Porch Detailing
- D. Plain Window Surrounds
- E. Walls Are Smooth, Not Textured

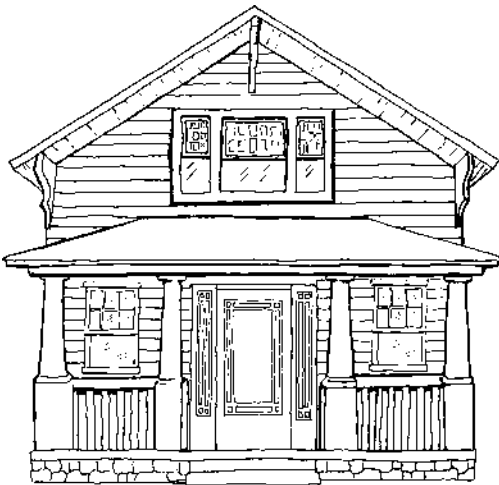
QUEEN ANNE



CHARACTER-DEFINING FEATURES

- A. Asymmetrical Facade
- B. Front Porch with Ornamental Woodwork
- C. Steeply-Pitched, Irregularly-Shaped Roof
- D. Use of Texture and Color to Differentiate Facade Elements

CRAFTSMAN



CHARACTER-DEFINING FEATURES

- A. Low-Pitched Gable Roof
- B. Exposed Eaves with Ornamental Braces
- C. Porches with Squared Columns
- D. Horizontal Emphasis

TUDOR



CHARACTER-DEFINING FEATURES

- A. Steeply-Pitched Roof with Prominent Gable
- B. Half-Timbering
- C. Narrow, Grouped Windows
- D. Varied Wall Materials, Including Decorative Brickwork, Stonework, and Stucco