



URBAN FORESTRY

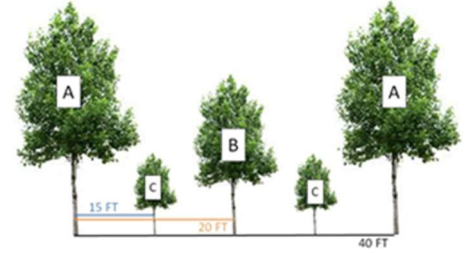
Louisville Parks and Recreation

STREET TREE PLANTING GUIDELINES

QUICK REFERENCE SHEET (09/29/22)

TREE TYPES – Height at Maturity

A	50 ft+	B	25 - 50 ft	C	10 - 25 ft
----------	--------	----------	------------	----------	------------



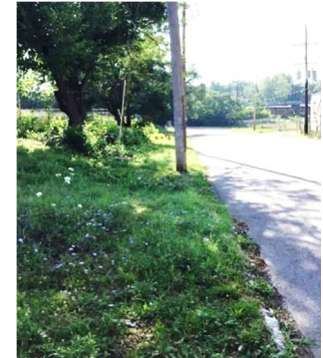
ALWAYS choose the largest tree type possible for the planting location.

ALLOWABLE SIZE TYPES – Green Verge (GV): The grassy area typically between the curb and the sidewalk. Occasionally the parcel line can include part of the lawn past the sidewalk. A continuous green verge is not surrounded by concrete (ex: lawns). **Plant in the middle of GV unless underground utility is present.**

GV Width (curb to sidewalk):	8 ft+	4-8 ft	3-4 ft	Less than 3 ft
Tree Types Permitted	A / B / C	B / C	ONLY C	Do Not Plant

Example of green verges:

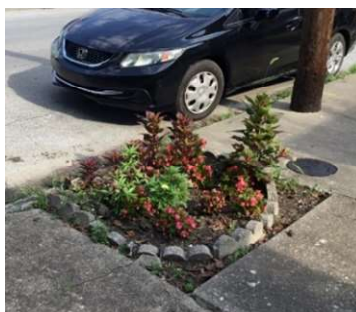
Example of continuous green verges:



ALLOWABLE SIZE TYPES – City Tree Well (TW): An isolated section within a sidewalk where a tree can be planted, typically a grassy square surrounded by concrete. All TW's must be filled with the largest tree type possible. TW length follows street. TW width is depth between sidewalk and curb.

TW Length/Width:	8 ft+	A / B / C	4-8 ft	B / C	Over 3 ft	C
TW minimum sizes (L x W):	A	8 x 5	B	4 x 4	C	3 x 3

Examples of tree wells:



Following the chart above: Only type C trees can be planted in a TW that is 3'x3'; only type B & C trees can be planted in a TW that is 4'x4'. TW must be at least 8'x5' to plant a type A tree. Type A trees cannot be planted in a smaller space.



URBAN FORESTRY

Louisville Parks and Recreation

STREET TREE PLANTING GUIDELINES

QUICK REFERENCE SHEET (09/29/22)

MINIMUM SPACING BETWEEN TREES – New & Existing

- A** 30 – 40 feet
- B** 20 – 30 feet
- C** 15 – 20 feet

Always choose the maximum spacing whenever possible (listed above in bold).

Smaller spacing is intended to be used to accommodate planting a larger tree type when you must shift the planting location due to utilities or infrastructure and is **not** meant to be used regularly. You may not plant closer than the smallest spacing distance listed.

Example: A trees must be 40 ft from other A trees. B trees must be 30ft away from A/B trees but can be 20ft from C trees. C trees can be planted 20 ft away from A/B/C.

Example: If a planting location must be shifted 3 feet due to an underground utility or service line, then you may plant 3 feet closer than the max distance. This is the alternative to planting a smaller tree type.

INFRASTRUCTURE / SIGNS – Minimum Lateral Distance from Tree (in feet)

Street Corners	20
Fire Hydrant	5
Buildings	3
Flood Wall	25
Parking Sign	2

Driveways / Alleys	10
Streetlamp (A / B only)	15
Electric Transformer Box	10
Bus Stop / Shelter	20
Railroad Crossing	10

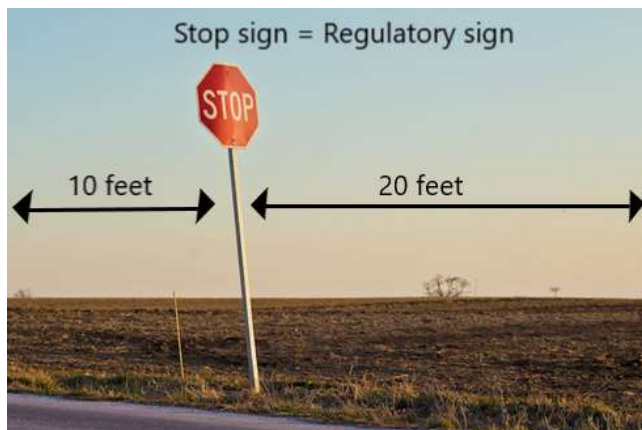
Curb / Sidewalk	3
Utility Pole (No Streetlamp)	5
Intersections / Stop Lights	20
Parking Meter	2
Pedestrian / Bike Crossing	10

Planting in FRONT of signs

- **Regulatory Sign** (Stop / Yield / Speed Limit / One Way / Street Name): **20 feet**
- **Warning Sign** (Intersection / Sharp Curve / Deer Crossing): **10 feet**
- **Handicap Parking: Not permitted in zone** (sign to sign) *unless* GV width is greater than **8 feet**
- **Billboards:** A trees **NOT** permitted within **50 feet** of a billboard. Allow **5-foot** clearance from pole.

Planting BEHIND signs

Plant half the distance listed for spacing in front of sign (Example: plant 10ft in front of a warning sign, 5ft behind it)



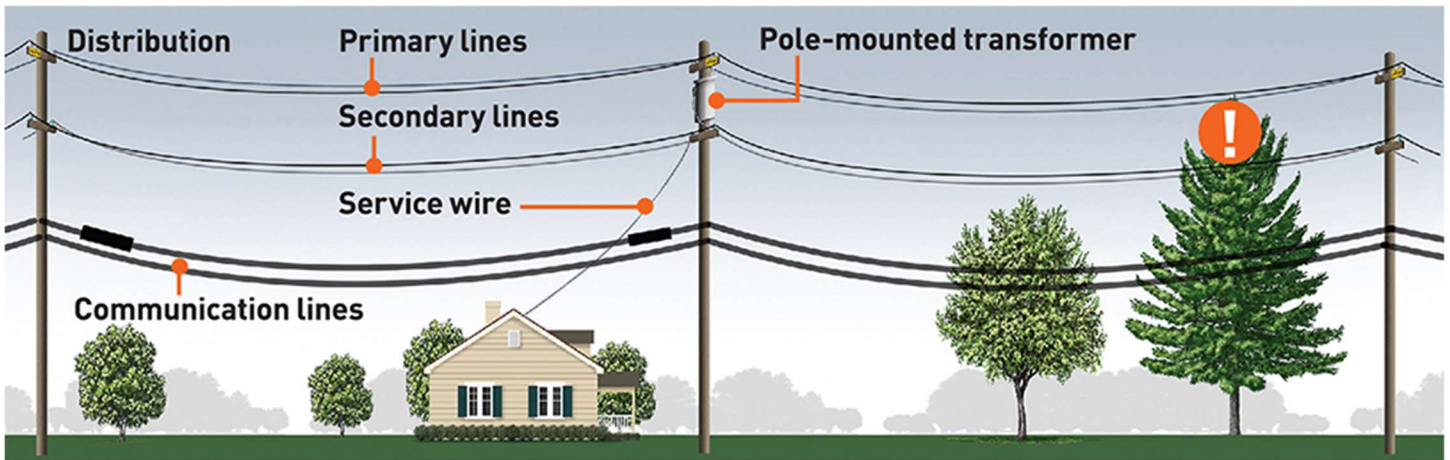


URBAN FORESTRY

Louisville Parks and Recreation

STREET TREE PLANTING GUIDELINES

QUICK REFERENCE SHEET (09/29/22)



OVERHEAD UTILITIES – Tree Type Directly Below

C trees are the only tree type permitted to be planted underneath overhead primary and secondary electric lines. All tree types can be planted under telecom lines.

Overhead Electrical Lines (Primary & Secondary): **ONLY TYPE C**

Telecommunication Lines: **A / B / C**

UTILITIES – Minimum Lateral Distance from Tree

If overhead utilities are on the other side of the street, you must measure from the tree to the line to ensure the trees will not grow in to the line when they mature.

Example: A trees must be 45ft+ feet away from the lines if measured from the planting location to directly under the lines.



Overhead Electrical Lines: **A** (45 feet+) **B** (15-45 feet) **C** (0-15 feet)

Underground Utility: **3 feet** on each side

Service Line (line to house): **3 feet** laterally on each side of the line



URBAN FORESTRY

Louisville Parks and Recreation

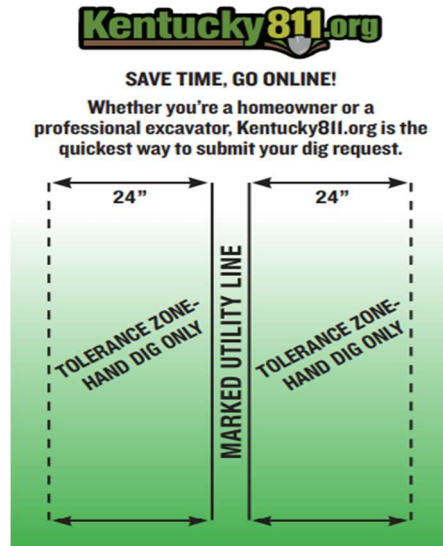
STREET TREE PLANTING GUIDELINES

QUICK REFERENCE SHEET (09/29/22)

INTERPRETING UTILITY MARKINGS

Colored paint, flags, chalk, and stakes represent different types of utilities. Urban Forestry uses pink paint to mark planting locations after reviewing located utilities and planting standards.

The **tolerance zone** is the space on each side of the underground utility where you must hand dig if you decide to plant. No machinery may be used within the tolerance zone.



COLOR CODE FOR UTILITY MARKINGS

Red	ELECTRIC
Yellow	GAS-OIL-STEAM
Orange	COMMUNICATIONS
Blue	WATER
Green	SEWER
Purple	RECLAIMED WATER
Pink	TEMPORARY SURVEY MARKINGS
White	PROPOSED CONSTRUCTION

Visit Kentucky811.org or call 811 two full working days before you dig.

Kentucky811.org

Urban Forestry planting standards state planting locations within 3 feet (36 inches) of an underground utility must be hand dug.

STEPS TO DETERMINE TREE TYPE - Summary

1. Look for overhead utilities. **If there are secondary and/or primary overhead electric utilities, the tree must be a C tree type.** Any tree type can be planted under telecom lines.
2. Determine your planting space (green verge, continuous green verge, or tree well) and measure the dimensions. Tree size type will be determined based on your planting location dimensions.
 - a. For green verges or tree wells: dimensions must be a minimum of 3 feet wide (3-foot width for green verges and tree wells must be at least 3 x 3 length and width. **Planting is not possible in any location with dimensions less than 3 feet.**
 - b. B trees can be planted in locations with dimensions greater than 4 feet. A trees can be planted in locations with dimensions greater than 8 feet.
3. Look around your planting location for nearby trees, utilities, infrastructure, or signs and adjust the tree type or location, if needed, to follow planting standards respective to your surroundings.