

# A Comparison of Government Revenues and Taxes between Jefferson County and Other Metropolitan Counties

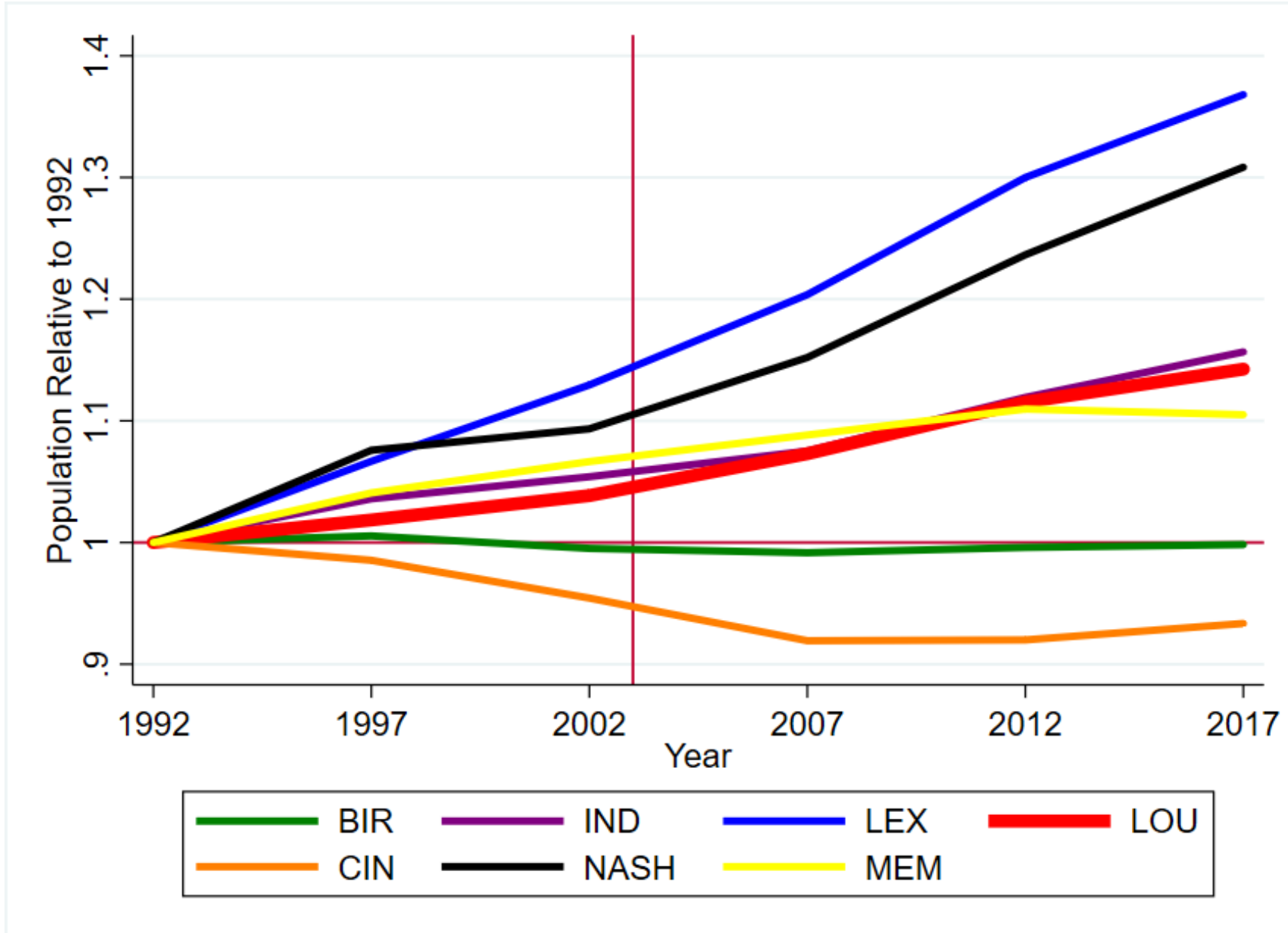
William Hoyt  
Bryan Endowed Professor of Public Policy  
and Professor of Economics  
University of Kentucky  
[whoyt@uky.edu](mailto:whoyt@uky.edu)

Lucas Taulbee  
Graduate Student, Martin School of  
Public Policy  
University of Kentucky  
[lucasedtaulbee@uky.edu](mailto:lucasedtaulbee@uky.edu)

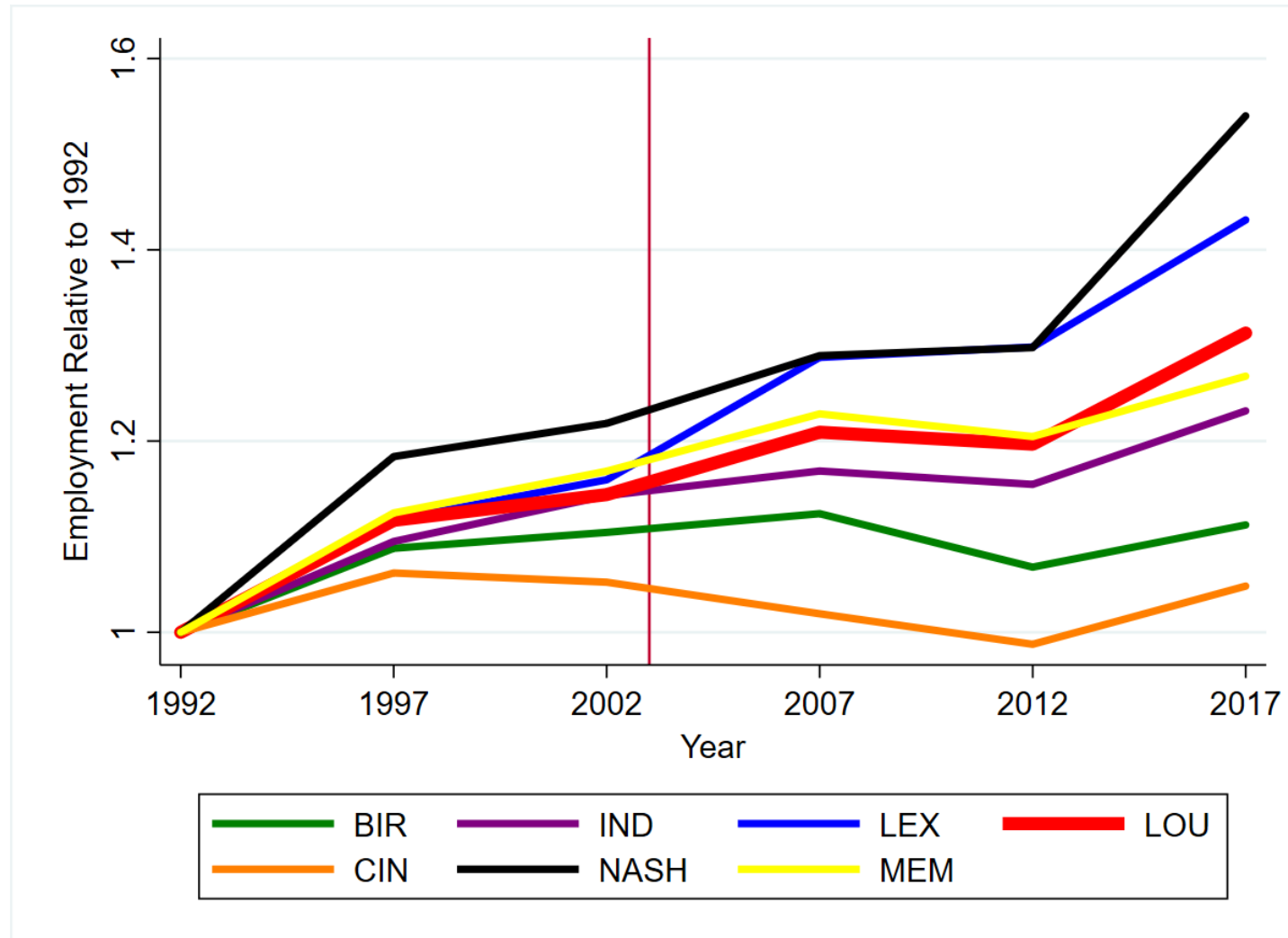
Merger Review Commission

July 14, 2023

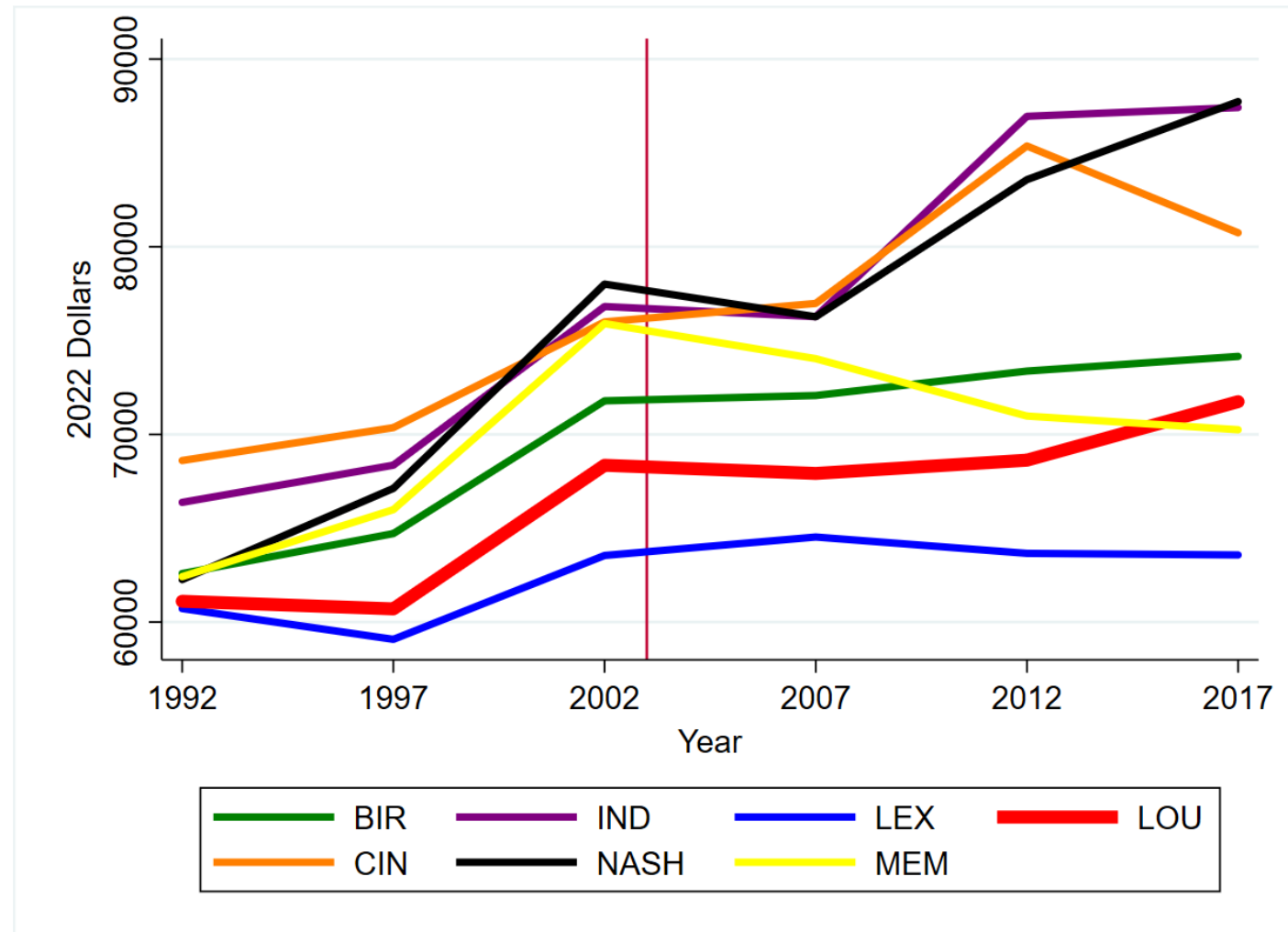
# Population Growth of the County



# Employment Growth of the County

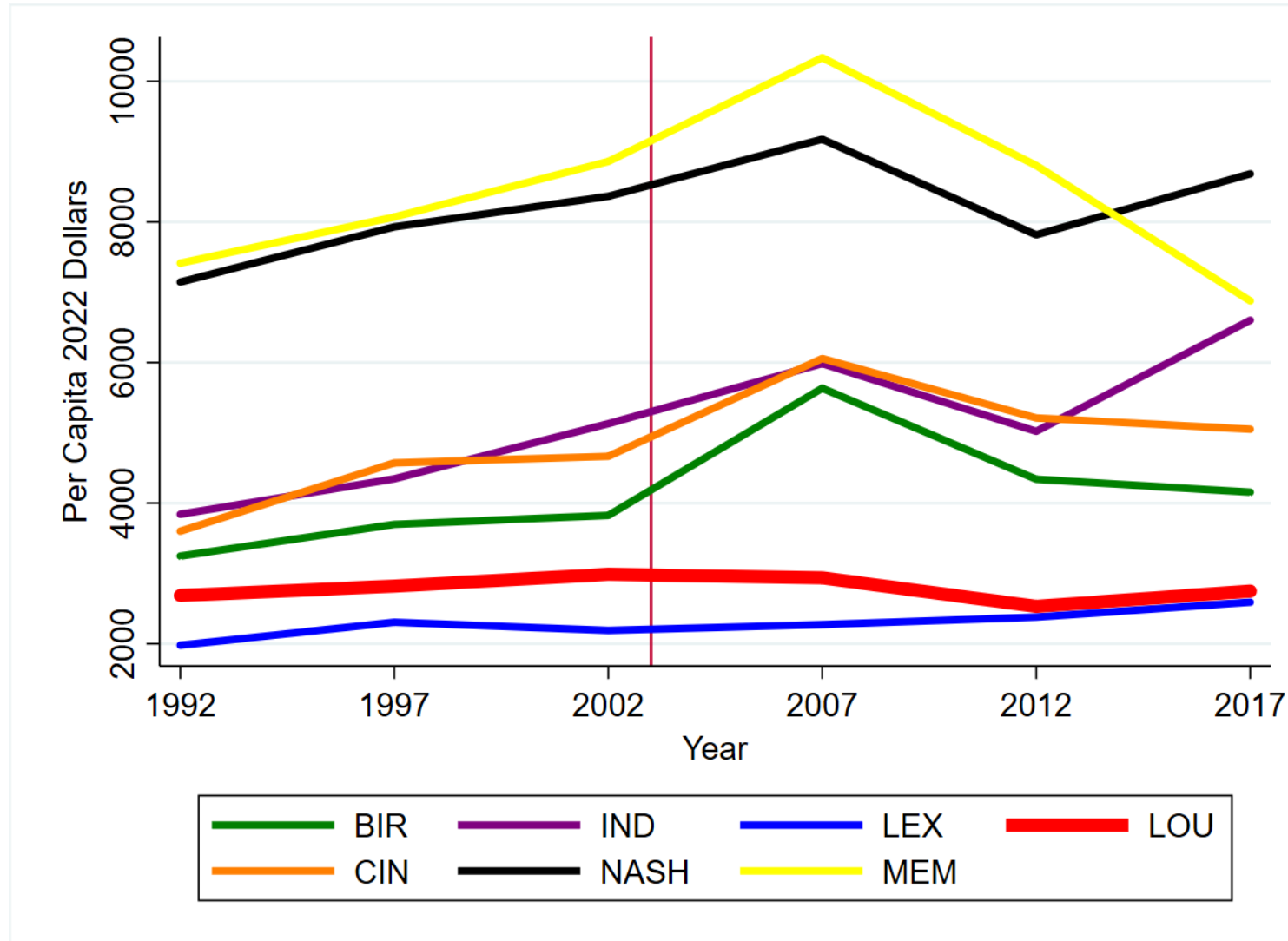


# Per Worker Earnings



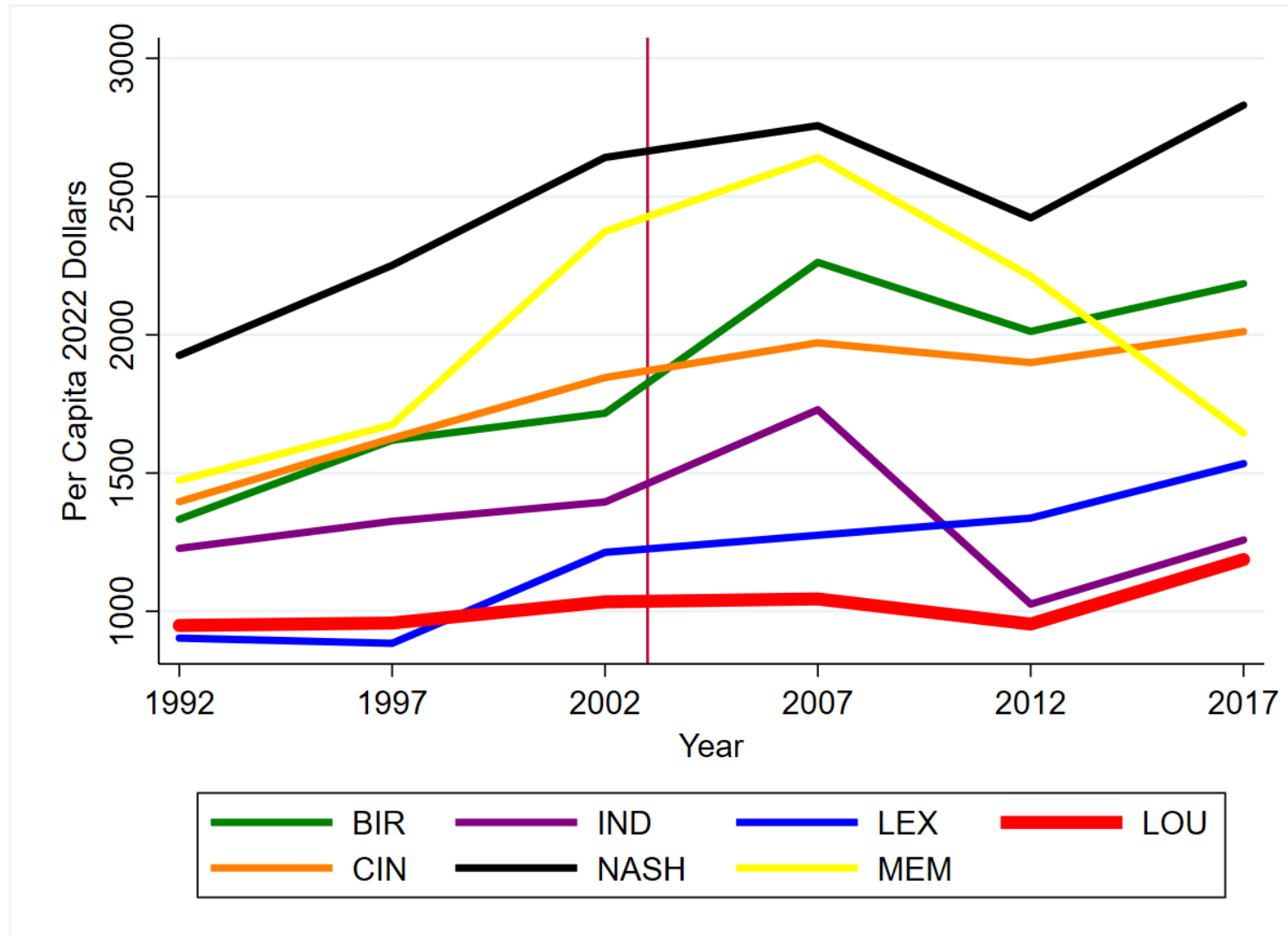
Employment data is from the Bureau of Economic Analysis (BEA) and is based on earnings and employment in Jefferson county (not on the employment of residents of Jefferson county).

# Total Government Revenues Per Capita

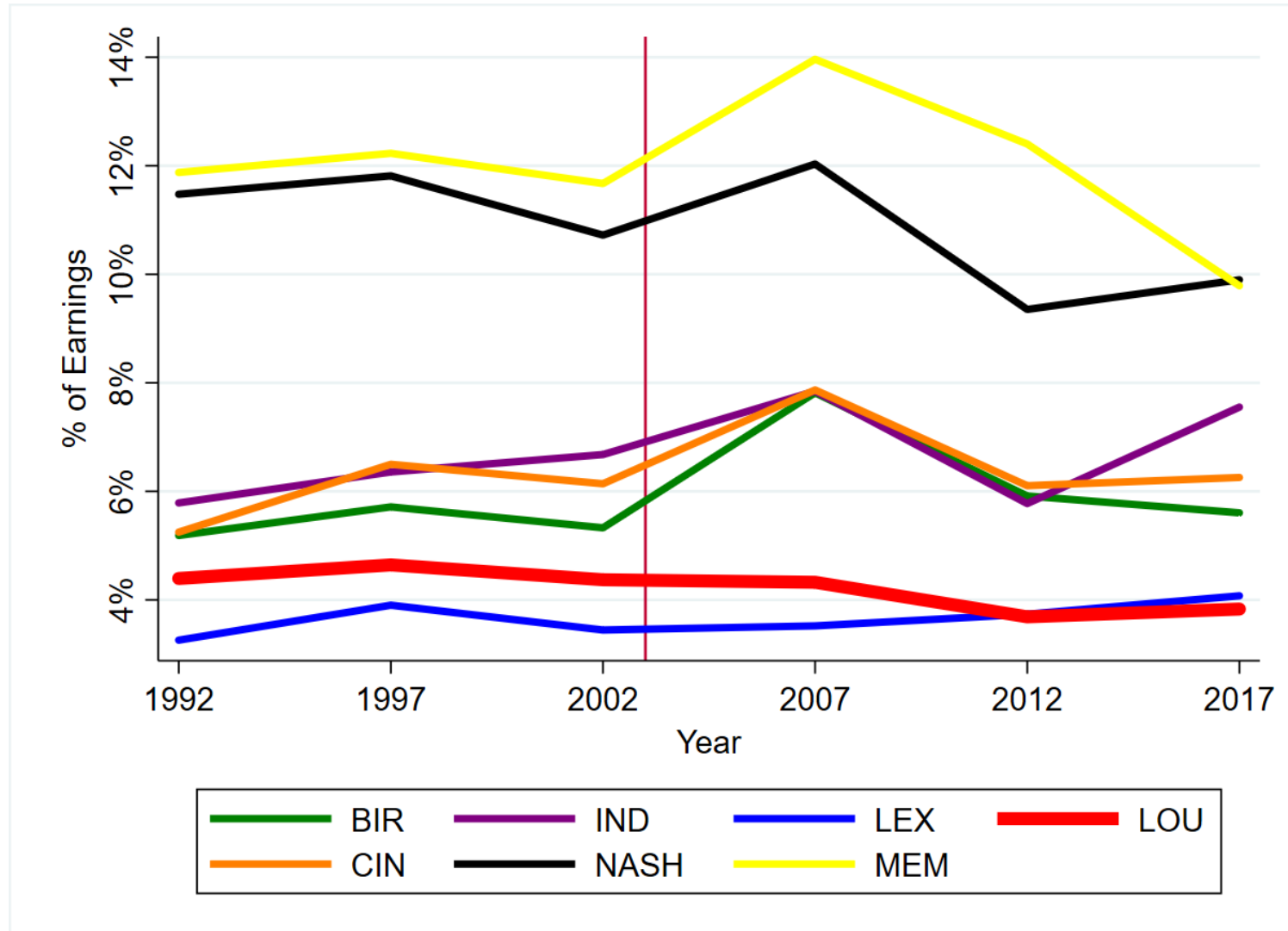


Government revenues from all Jefferson county governments including municipalities, fire districts, townships, special districts (library, water, sewer) but excluding the school district. Data is from the Census of Governments.

# Total Taxes Per Capita

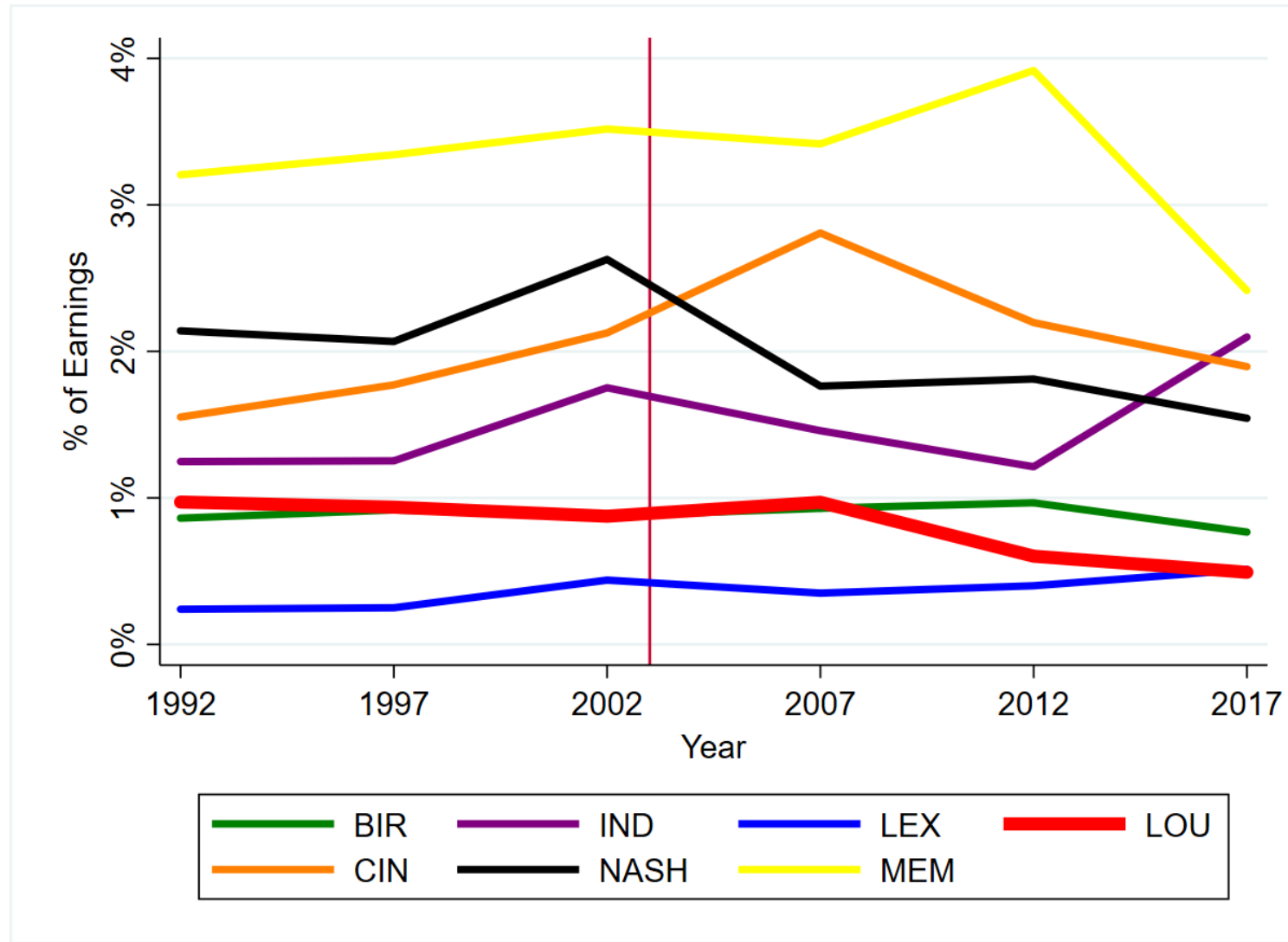


# Total Revenue as a Percentage of Earnings



Based on earnings of workers in Jefferson county not residents of the county (includes non-resident workers and excludes Jefferson county residents working outside of Jefferson county).

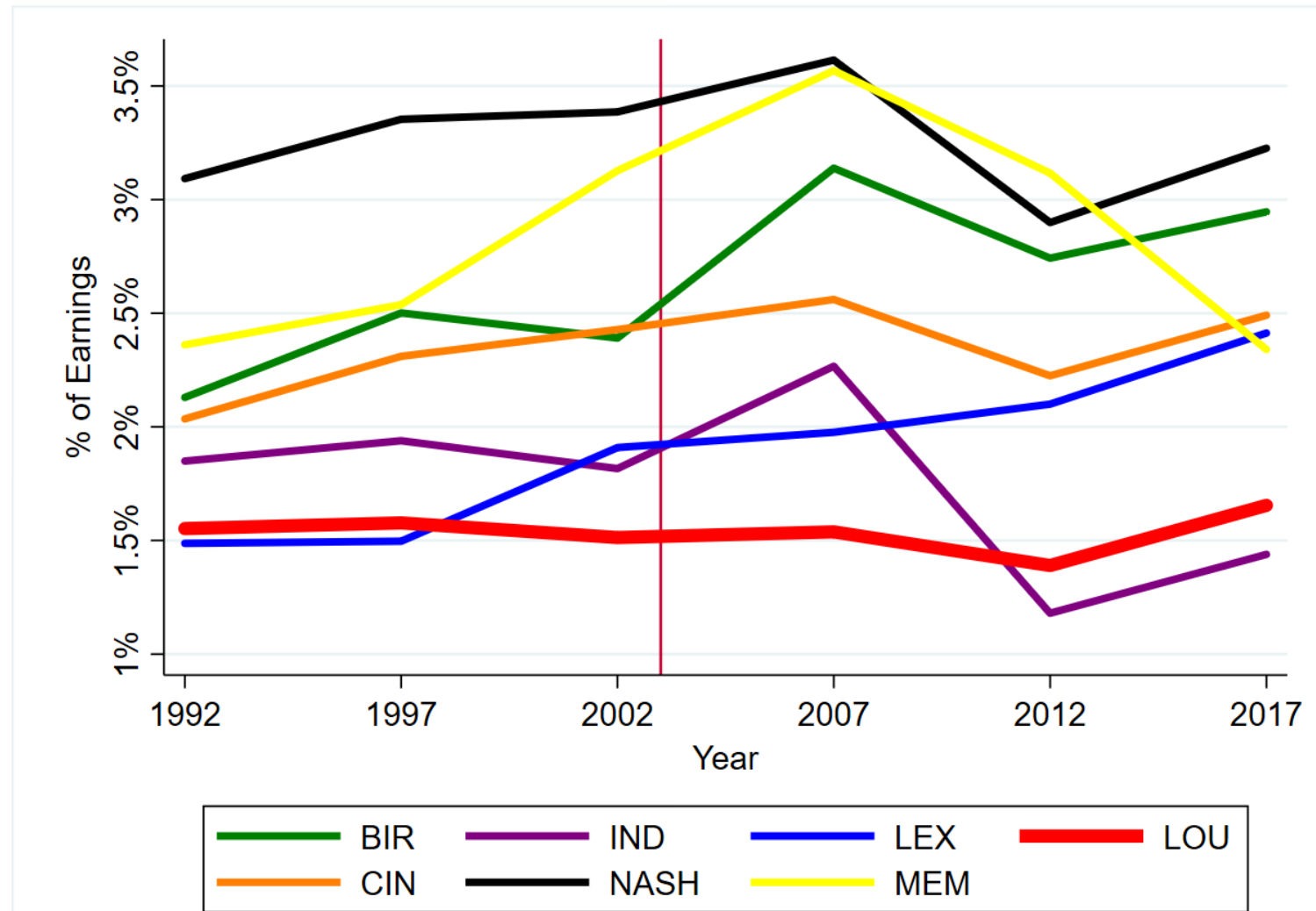
# Intergovernmental Revenue as a Percentage of Earnings



Based on earnings of workers in Jefferson county not residents of the county (includes non-resident workers and excludes Jefferson county residents working outside of Jefferson county).

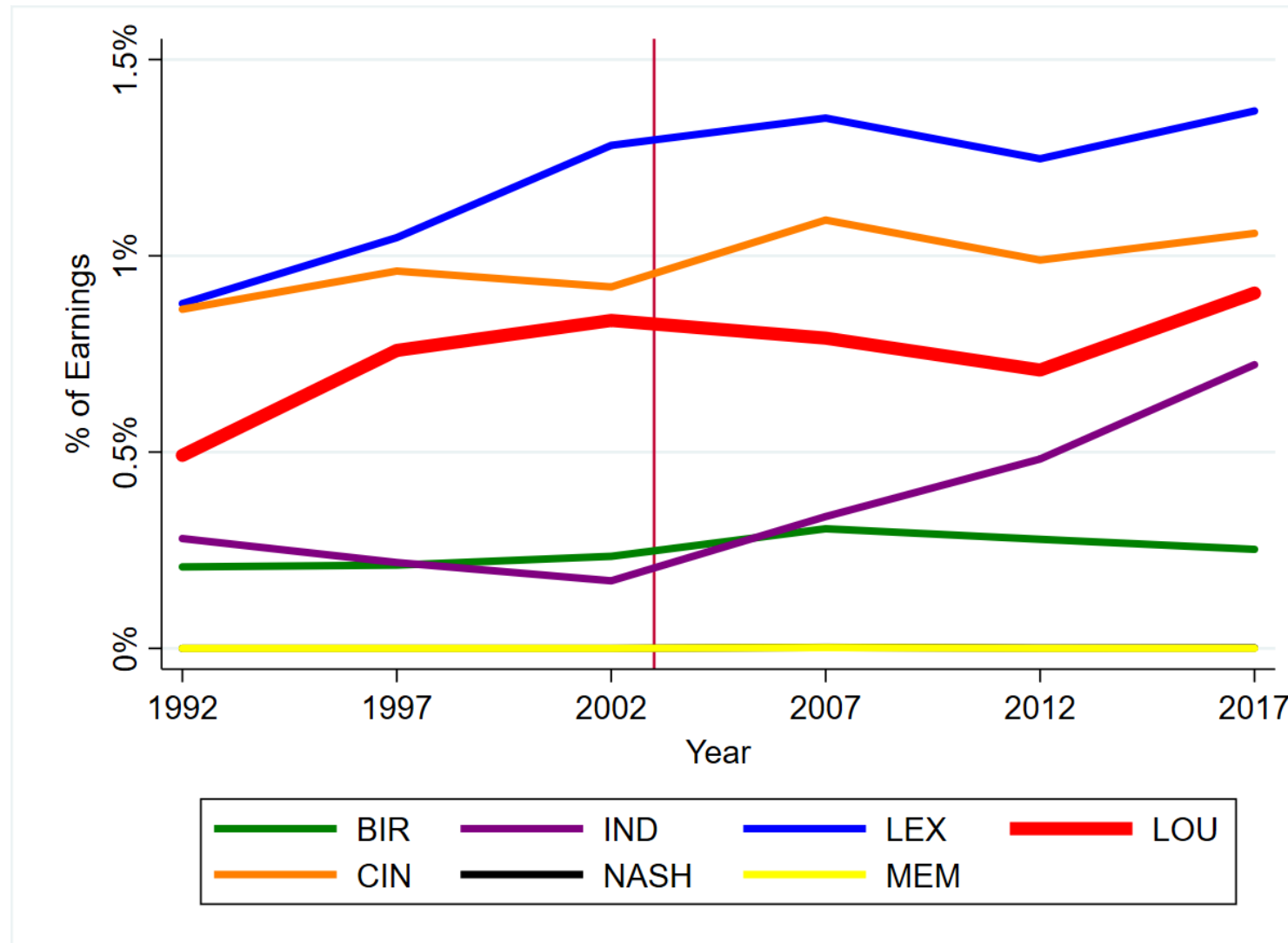


# Total Taxes as a Percentage of Earnings



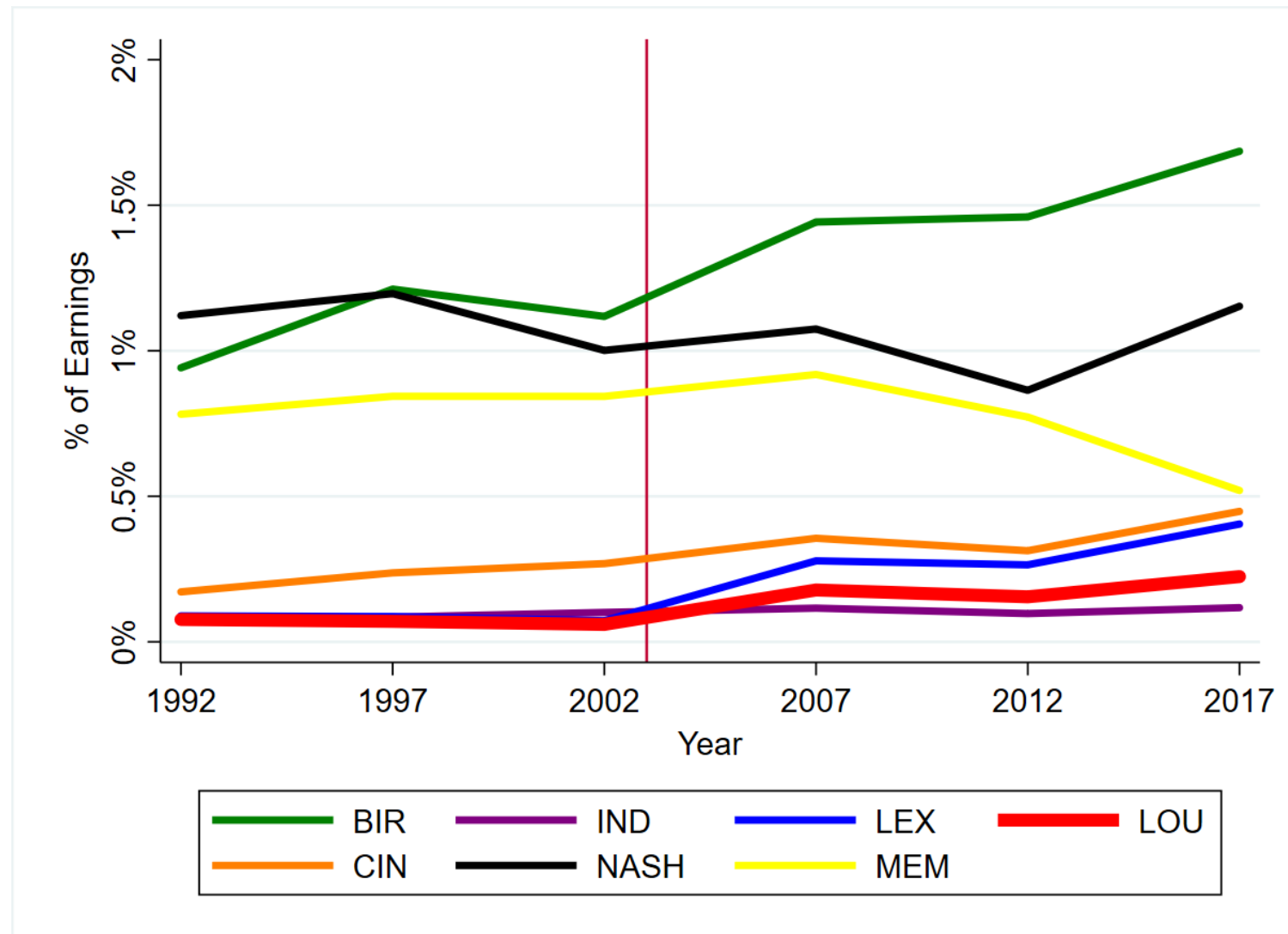
Based on earnings of workers in Jefferson county not residents of the county (includes non-resident workers and excludes Jefferson county residents working outside of Jefferson county).

# Total Income Taxes as a Percentage of Earnings



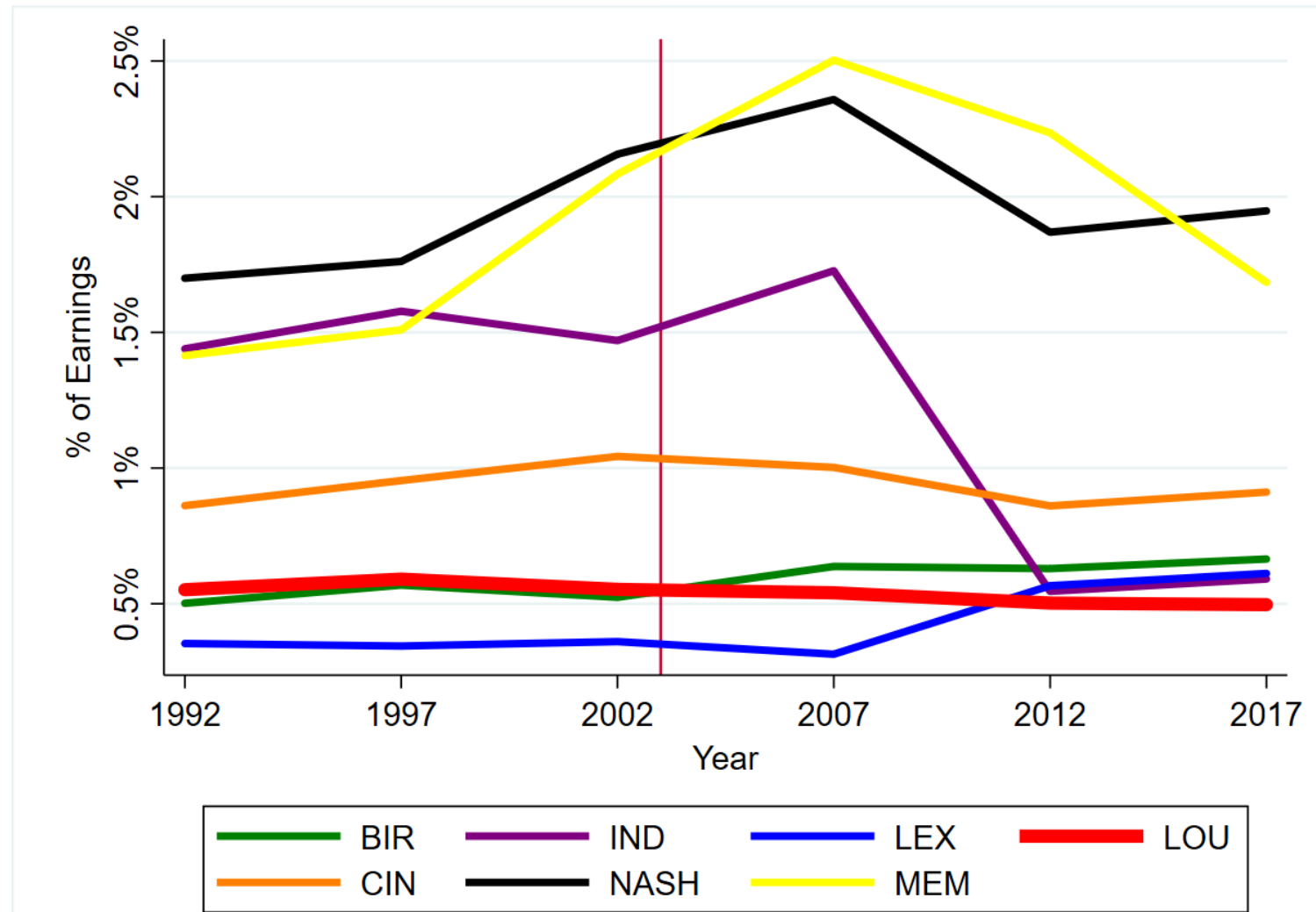
Based on earnings of workers in Jefferson county not residents of the county (includes non-resident workers and excludes Jefferson county residents working outside of Jefferson county).

# Total Sales Taxes as a Percentage of Earnings



Based on earnings of workers in Jefferson county not residents of the county (includes non-resident workers and excludes Jefferson county residents working outside of Jefferson county).

# Property Taxes as a Percentage of Earnings



Based on earnings of workers in Jefferson county not residents of the county (includes non-resident workers and excludes Jefferson county residents working outside of Jefferson county).