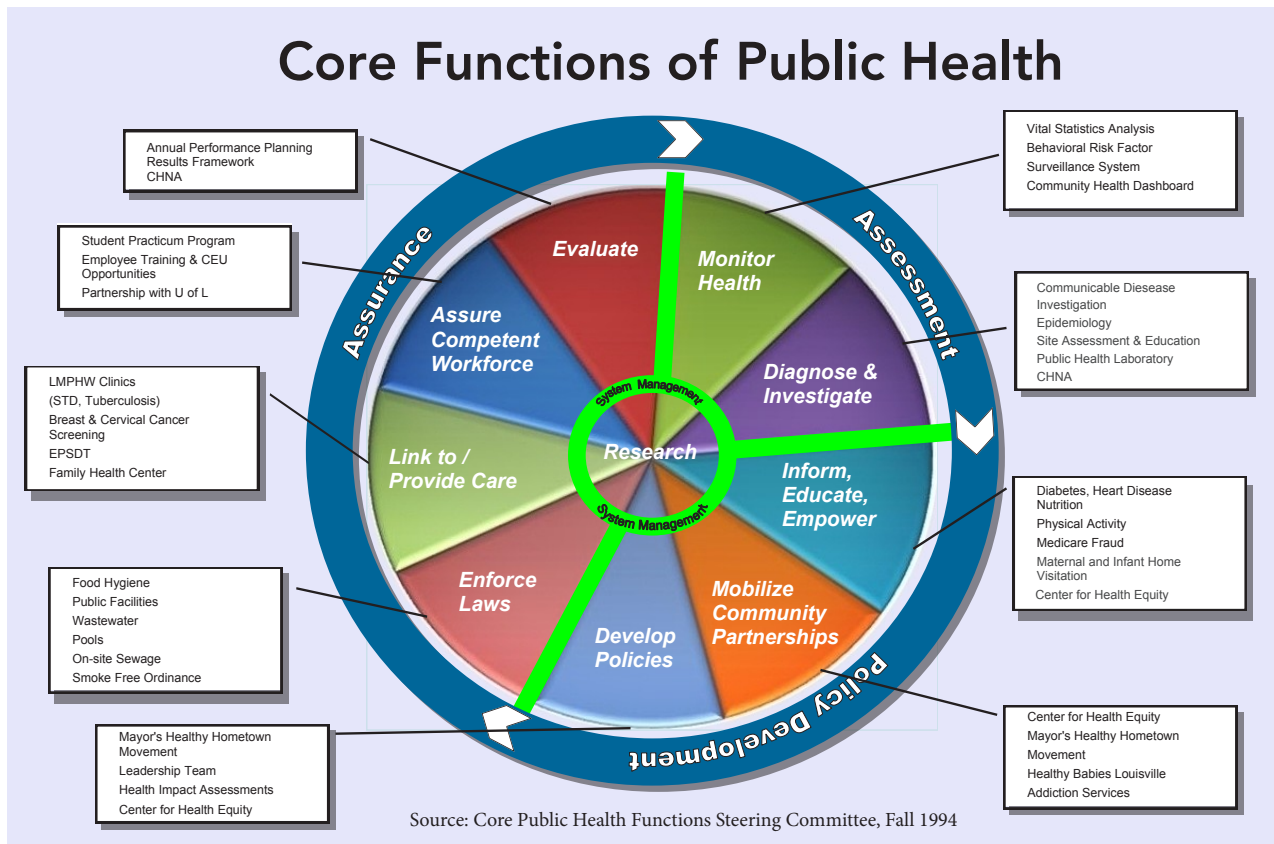


An accredited public health department

Core Functions of Public Health



LMPHW Service Count Highlights for Fiscal Year July 2015 - June 2016	
For full details, read our Annual Report on our website	
CLINICAL SERVICES	999 vaccines given
	713 provisionally confirmed reportable disease cases
	6,002 visits to our TB Clinic
	5,538 visits to our Specialty Clinic
	320 clients at our MORE Center
	3,875 clients in our Syringe Exchange Program
COMMUNITY HEALTH AND PREVENTION	989 unique Healthy Start clients
	13,158 WIC unique program participants
ENVIRONMENTAL HEALTH AND EMERGENCY PREPAREDNESS	9,439 restaurant inspections
	555 temporary food permits issued
	5,070 public facility inspections
	7,031 recreational water samples collected (pool, spa)
	2,070 radon kits provided to residents
	96 hazardous material responses
	35,000 mosquito catch basin treated
	4,031 children tested for high blood lead levels
OFFICE OF POLICY, PLANNING AND EVALUATION	45 individuals monitored for Ebola
	14,282 applications for birth certificates
	7,821 applications for death certificates
OFFICE OF COMMUNICATIONS AND COMMUNITY RELATIONS	50 media calls per month
	16 open records requests per month
	178 phone calls per week

DATA RESOURCES AT LMPHW

Please access <https://louisvilleky.gov/government/health-wellness/public-health-data-reports> for all of the following reports:

COMMUNITY DASHBOARD

www.HealthyLouisvilleMetro.org :

allows us to track our progress toward achieving the city goals set in Healthy Louisville 2020 and also serves as a way for community partners to communicate their ideas and efforts with LMPHW and with one another.



Community Dashboard



2015 COMMUNITY HEALTH NEEDS ASSESSMENT (CHNA)

LMPHW collaborates with all hospitals to conduct a CHNA every 3 years.

ANNUAL REPORT

Contains description and count of all services provided by LMPHW during one fiscal year ending June 30, 2016.

BEHAVIORAL RISK FACTOR SURVEILLANCE SYSTEM (BRFSS)

LMPHW conducted its own BRFSS from 2013-2015 and published a report about major findings. Data from KY BRFSS is also available annually.

BIRTH AND DEATH RECORDS

We receive annual birth and deaths data for all Louisville Metro.

HEALTH EQUITY REPORT

Highlights disparities in health outcomes across the city and serves as a catalyst for conversations and collaboration across the city to embrace a health equity lens.

HEALTHY LOUISVILLE 2020

Is a shared community agenda to guide behavior and decision making for residents, city officials, community organizations, academic partners, business leaders, and faith-based community.

HOSPITAL AND EMERGENCY ROOMS DISCHARGES

Annual data is available on all Louisville Metro hospitals and ERs discharges.

PRACTICUM CATALOGUE

Contains information about the different divisions and programs along with some projects ideas. It is updated annually.

JOBS AND CAREER DEVELOPMENT

<https://louisvilleky.gov/city-services/jobs-career-development>