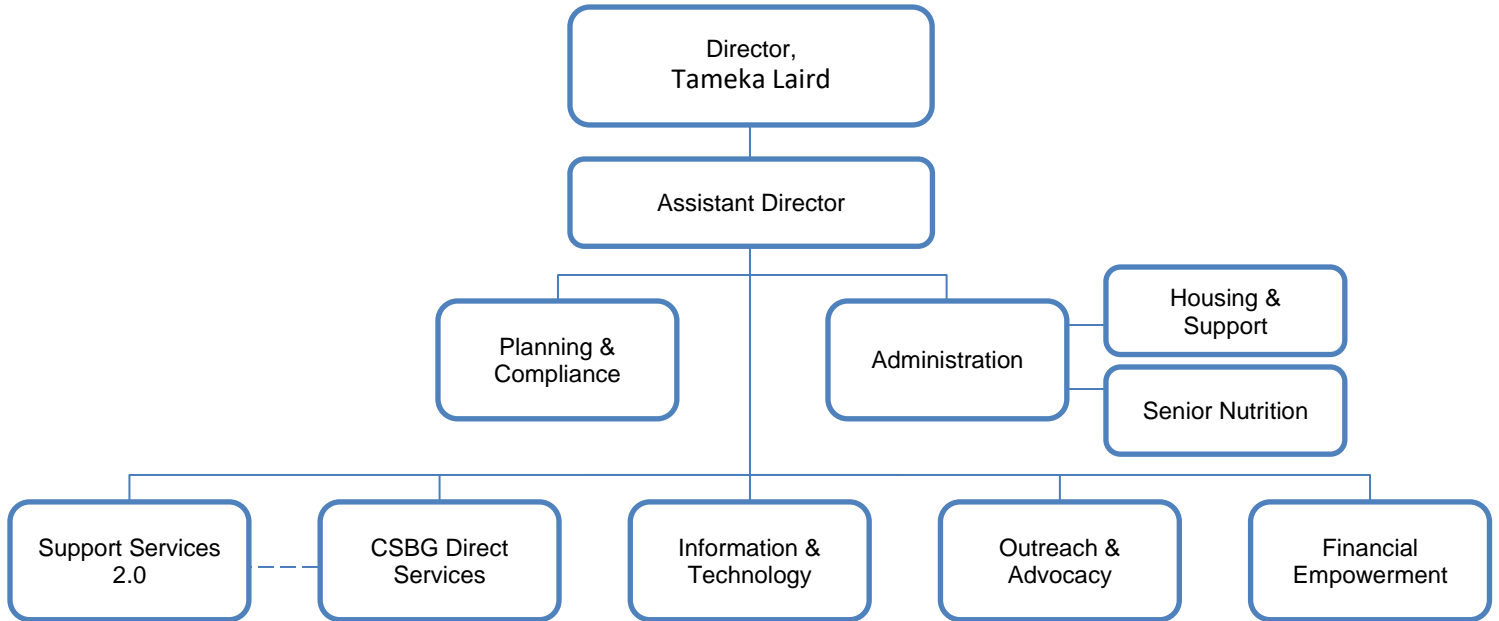


OFFICE OF RESILIENCE AND COMMUNITY SERVICES

as of May 2019



Administration – Ensures daily operations of the department, strategic planning, LouieStat and oversight of budgetary functions, personnel and payroll functions, agency-wide billing and the routing of contractual agreements.

Planning & Compliance – Manages and monitors federally funded subrecipient contracts for CDBG, ESG and HOPWA programs housed within our department, and ensures our department compliance with regulatory requirements.

CSBG Direct Services – Offers programs and supportive services to help households overcome barriers to long-term sustainability and self-sufficiency. Areas of focus include employment training leading to certification or licensure, tuition assistance for adult students, and early childhood education scholarships.

Financial Empowerment – Works to equip residents of Louisville with the knowledge, skills and access they need to achieve greater financial security. Empowered people create and expand businesses, raise healthy families, support their community, and contribute to the tax base so critical to a sustainable city.

Housing & Support – Provides case management and oversight of (9) Housing and Urban Development grants. The grants provide approximately 700 homeless persons with rental assistance while also receiving case management services. All referrals for the Housing and Support Division come through the Single Point of Entry team through the Coalition for the Homeless.

Outreach & Advocacy – Focuses on community outreach, volunteerism and advocacy. The division provides low income energy assistance (LIHEAP); promotes volunteerism through the Retired Senior Volunteer Program (RSVP) and Foster Grandparent Program (FGP); and advocates for special populations through the Office for Women, Office of Youth Development, Office of Aging and Disabled Citizens and Office for Veterans.

Senior Nutrition – Provides more than 200,000 meals each year to senior citizens and homebound individuals through the Meals on Wheels program and nearly 20 neighborhood-based congregant sites for more active seniors.

Support Services 2.0 – Is a partnership of Louisville Metro Government, Jefferson County Public Schools, Kentucky Cabinet for Health and Family Services and Seven Counties which provides one-stop centers bringing together health care, education, employment and social services.

Information & Technology – Focuses on reporting, data governance, transparency, including but not limited to hardware and software support for the department.