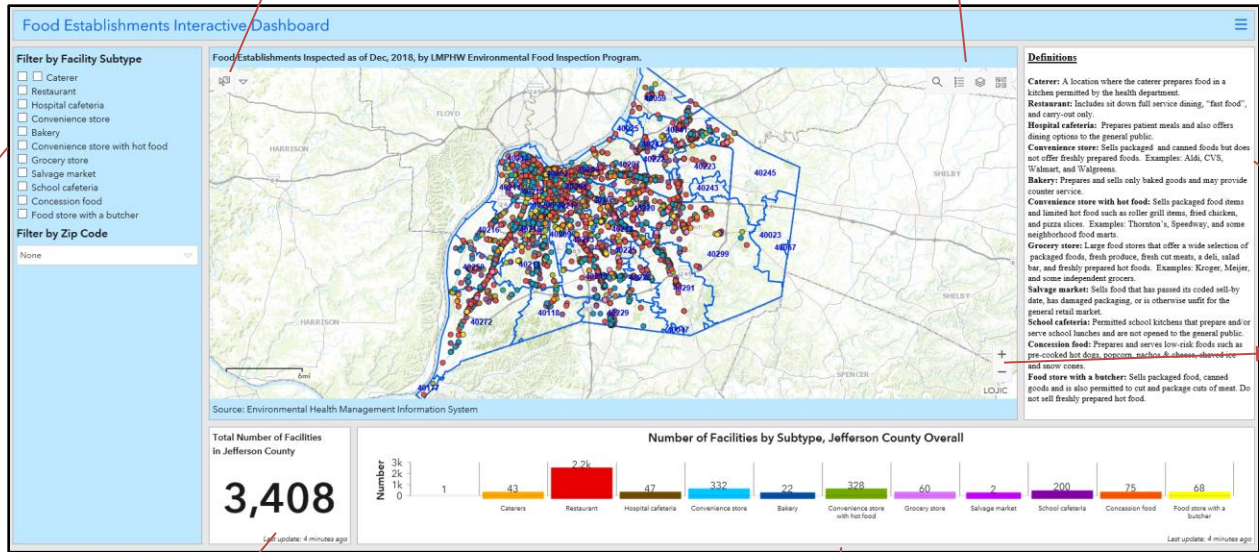




## Food Establishments Dashboard User Guide

Map extent selector

Search feature, Map legend and tools



Side Panel

Definitions

Zoom In/Out

Indicator

Serial chart

**Side Panel:** Consists of “Filters by Facility Subtype” which allows users to select a specific kind of food establishment to display on the map. Multiple selections could be made at once using this tool. Please refer to the “definitions” panel on the right of the map to understand what each subtype means. The total number of facilities in the indicator pane changes based on these selections. Ex: If “Caterer” is selected, the total number in the indicator pane changes to show only the total number of catering facilities.

The “Filter by Zip Code” lets you select specific Zip Codes.

## Map Elements:



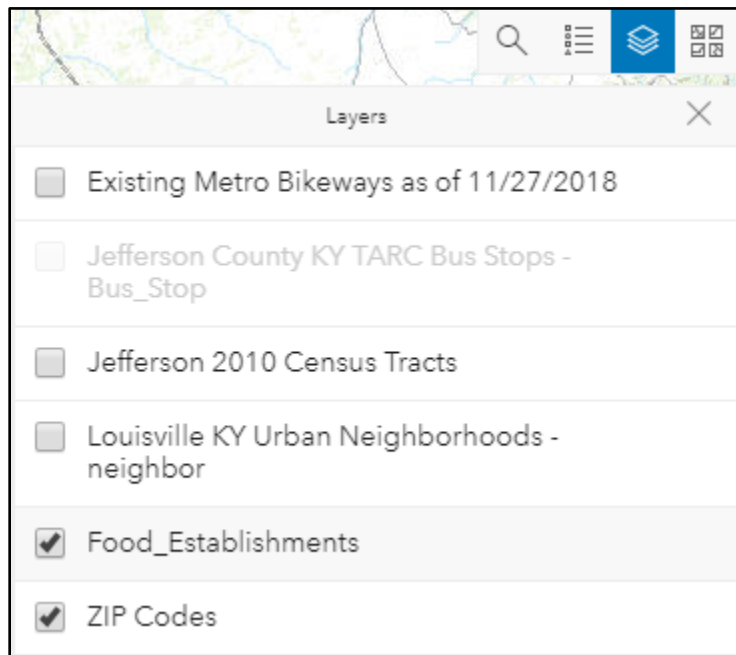
**Search:** Allows users to find locations or search features on the map. Ex: an address could be entered to find food establishments around the given address.



**Legend:** Displays the map's legend.



**Layers:** Allows users to select and add various other layers to the base map to include additional details such as the bikeways, TARC stops, smaller geographic areas within Louisville such as the census tracts and urban neighborhoods. **You will have to zoom to a closer extent to activate the TARC stops layer.**



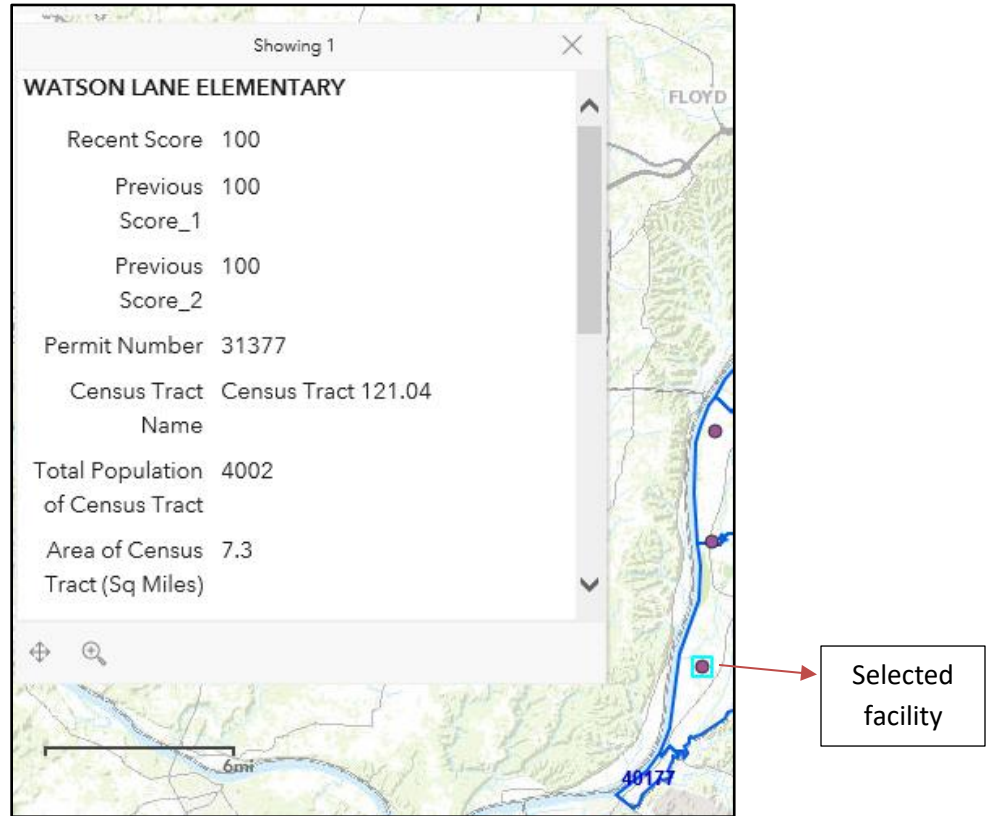
**Base map switcher:** Allows dashboard users to change the base map.



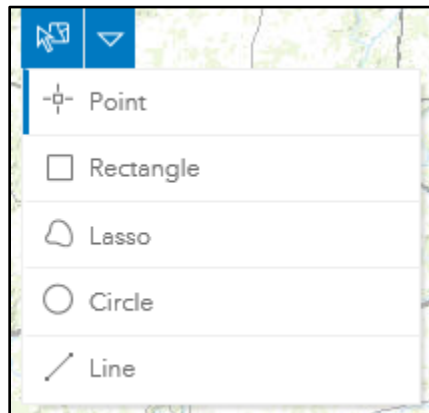
**Zoom In/Out:** Allows user to zoom in or out on a map.

**Pop-ups:** Displays descriptive information about a food establishment when clicked on a facility (each point) on the map. The pop-up description provides name of the selected facility; its three

recent food inspection scores and permit number. 2010 Census information for the area is also included for general audience and entrepreneurs.



**Custom map actions:** Lets users select geographic areas on the map to display food establishments that are specific to the selected area. Buffers in different shapes can also be created to filter out establishments outside the selected area. This tool needs to be turned off after every use.



**Indicator:** Shows the total number of food establishments inspected within Jefferson County by Dec, 2018.

**Serial chart:** Indicates the number of food facilities by subtype. Options on the side panel (or) each bar on the serial chart's horizontal axis could be used to make selection of subtypes. The map changes according to the selections made.

**Side panel with definitions:** provides definitions of the subtypes of food facilities indicated on the map. These definitions are created by Environmental Food Inspection Program at LMPHW.

For further information please contact Haritha Pallam at [Haritha.pallam@louisvilleky.gov](mailto:Haritha.pallam@louisvilleky.gov). For data requests, complete the data request form at: <https://louisvilleky.wufoo.com/forms/lmphw-data-request-form/>