

**Louisville Metro Air Pollution Control District**  
**PM<sub>2.5</sub> Monitoring Report**  
**October 2018**

This report summarizes PM<sub>2.5</sub> data collected by Federal Reference Method (FRM) samplers. Measurements are reported as 24-hour averages in micro-grams per cubic meter (µg/m<sup>3</sup>). The data are subject to further quality assurance checks and are not final.

**PM<sub>2.5</sub> Monthly Data Summary for September 2018**

Site Name	Maximum		Minimum		Sample	Monthly
	Conc.	Date	Conc.	Date	Recovery	Average
Firearms Training *	14.4	9/20/18	3.8	9/8/18	NA	7.3
Durrett Lane	14.7	9/20/18	3.4	9/23/18	NA	7.2
Cannons Lane	13.0	9/20/18	2.9	9/23/18	NA	6.4
Watson Lane **	14.4	9/14/18	2.1	9/23/18	NA	7.5
Overall	14.7	9/20/18	2.1	9/23/18	NA	7.1

\* Firearms Training replaced Southwick on 1/5/2018

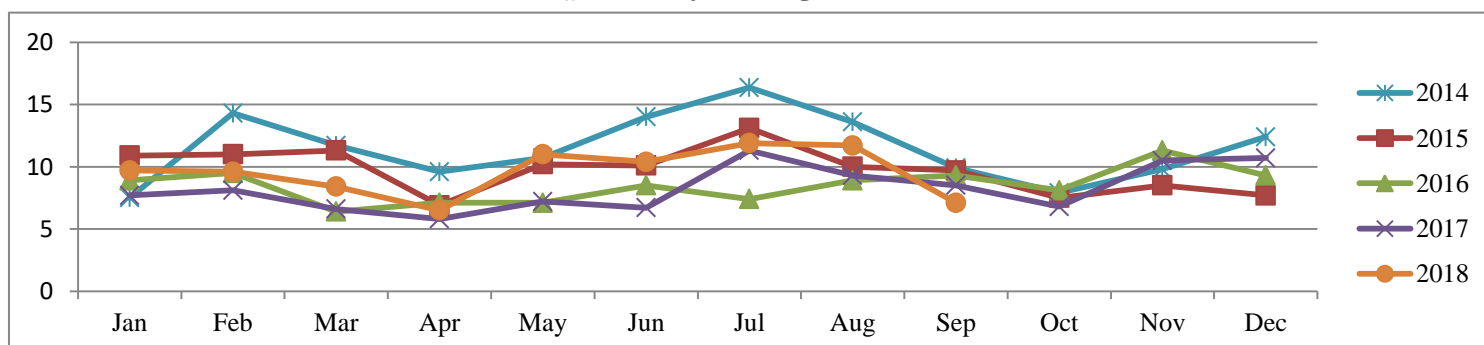
\*\* 2018 Data from FEM BAM Instrument

**PM<sub>2.5</sub> Monthly Averages Tracking Table for 2008-2018**

Year	Jan	Feb	Mar	Apr	May	Jun	Jul	Aug	Sep	Oct	Nov	Dec	Months >Annual Standard
2008	11.8	12.0	11.9	11.6	12.1	11.8	18.1	17.1	17.6	10.6	14.3	9.4	3
2009	14.6	11.1	11.3	9.3	10.3	13.9	13.1	12.6	12.1	8.9	13.8	12.9	0
2010	13.3	16.3	12.2	12.2	11.0	14.1	16.0	16.4	11.0	17.0	12.6	13.7	4
2011	15.2	10.6	9.7	8.6	12.1	14.1	19.7	16.2	11.5	9.0	7.6	9.9	3
2012	8.9	9.5	9.2	7.2	11.7	10.9	12.5	11.9	8.6	7.3	13.1	9.6	0
2013*	10.5	10.0	8.5	7.6	8.8	11.6	10.1	12.7	11.9	9.3	7.2	10.7	1
2014	7.5	14.3	11.7	9.6	10.7	14.0	16.4	13.6	9.9	7.9	9.8	12.4	5
2015	10.9	11.0	11.3	6.9	10.2	10.1	13.1	10.0	9.7	7.5	8.5	7.7	1
2016	8.9	9.5	6.4	7.1	7.1	8.5	7.4	8.9	9.3	8.1	11.3	9.3	0
2017	7.7	8.1	6.6	5.8	7.2	6.7	11.3	9.3	8.5	6.8	10.5	10.7	0
2018	9.7	9.6	8.4	6.5	11.0	10.4	11.9	11.7	7.1				0
Average	11.3	11.7	11.2	9.4	11.7	13.4	15.5	15.4	12.1	9.8	11.0	11.2	

\*The new PM<sub>2.5</sub> standard of 12 µg/m<sup>3</sup> became effective on March 18, 2013

**PM<sub>2.5</sub> Monthly Averages 5-Year Trend**



### National Ambient Air Quality Standards (NAAQS):

National Ambient Air Quality Standards consist of primary and secondary standards. The primary standards define levels of air quality which EPA judges are necessary, with an adequate margin of safety, to protect the public health. The secondary standards define levels of air quality which EPA judges necessary to protect the public welfare from any known or anticipated adverse effects of a pollutant. For PM<sub>2.5</sub> the levels of the primary and secondary standards are the same.

### National Ambient Air Quality Standard for PM<sub>2.5</sub> - Annual Standard:

The annual standard is designed to provide an appropriate level of protection from long-term exposure to PM<sub>2.5</sub>. The standard is met when the annual design value is less than or equal to 12 µg/m<sup>3</sup>. The standard changed from 15 µg/m<sup>3</sup> to 12 µg/m<sup>3</sup> on March 18, 2013. The annual design value is calculated by averaging the annual means of 3 consecutive complete years of air quality data. The table below compares data collected from 2012 through year-to-date 2018 to the PM<sub>2.5</sub> annual standard.

**PM<sub>2.5</sub> Annual Means and Annual Design Values**

Site Name	Annual Means µg/m <sup>3</sup>							Annual Design Values				
	2012	2013	2014	2015	2016	2017	2018	2012-2014	2013-2015	2014-2016	2015-2017	2016-2018
Firearms Tr*	12.3	12.3	11.2	10.4	8.3	8.3	9.6	11.9	11.3	10.0	9.0	8.7
Durrett Lane	10.3	10.2	12.0	10.0	9.2	8.9	10.3	10.8	10.7	<b>10.4</b>	<b>9.4</b>	<b>9.5</b>
Cannons Lane	12.3	11.1	11.0	9.5	7.9	7.9	9.1	11.5	10.5	9.5	8.4	8.3
Watson Lane	13.3	12.5	12.2	10.4	8.4	8.1	9.4	<b>12.7</b>	<b>11.7</b>	10.3	9.0	8.6

**Bold:** Design value for Louisville

\* Firearms Training replaced Southwick in 2018

### National Ambient Air Quality Standard for PM<sub>2.5</sub> - 24-Hour (Daily) Standard:

The 24-hour standard is designed to provide an appropriate level of protection from short-term exposure to PM<sub>2.5</sub>. The standard is met when the 24-hour design value is less than or equal to 35 µg/m<sup>3</sup>. The design value is based on 3 consecutive complete years of air quality data and is calculated by taking the average of the 98<sup>th</sup> percentile value for each of the 3 years. The 98<sup>th</sup> percentile value is the 24-hour average out of a year of PM<sub>2.5</sub> monitoring data below which 98 percent of all 24-hour averages fall. The table below compares data collected from 2012 through year-to-date 2018 to the 24-hour standard for PM<sub>2.5</sub>.

**PM<sub>2.5</sub> Annual 98<sup>th</sup> Percentiles and 24-Hour Design Values**

Site Name	Annual 98 <sup>th</sup> Percentile Value µg/m <sup>3</sup>							24-Hour Design Values				
	2012	2013	2014	2015	2016	2017	2018	2012-2014	2013-2015	2014-2016	2015-2017	2016-2018
Firearms Tr*	24.1	24.0	24.3	22.3	17.0	17.8	20.9	24.1	23.5	21.2	19.0	18.6
Durrett Lane	22.1	20.6	26.0	22.1	18.7	20.7	24.7	22.9	22.9	<b>22.3</b>	<b>20.5</b>	<b>21.4</b>
Cannons Lane	23.2	22.5	23.9	21.7	18.7	17.2	21.6	23.2	22.7	21.4	19.2	19.2
Watson Lane	26.3	23.8	26.2	22.8	16.2	17.7	20.6	<b>25.4</b>	<b>24.3</b>	21.7	18.9	18.2

**Bold:** Design value for Louisville

\* Firearms Training replaced Southwick in 2018

**Louisville Metro Air Pollution Control District**  
**8-Hour Ozone Monitoring Report**  
**October 2018**

This report summarizes ozone data collected by Automated Equivalent Method (AEM) ozone analyzers located within the Louisville Metropolitan Statistical Area. Measurements are reported as 8-hour averages in parts-per-billion (ppb). The data are subject to further quality assurance checks and are not final.

**2018 8-Hour Ozone Maximum Values and Exceedances through October 11th**

Date	# of 8-Hour Exceeds	# of Days Exceeds	Charlestown Clark County IN	New Albany Floyd County IN	Carrithers Jefferson County KY	Watson Lane Jefferson County KY	Cannons Lane Jefferson County KY	Buckner Oldham County KY	Shepherdsville Bullitt County KY
03/15/18	0	0	54.5	54.2	52.1	59.3	57.1	51.8	55.6
04/12/18	0	0	55.2	55.1	57.3	53.1	55.5	54.5	57.1
05/01/18	0	0	63.3	61.2	67.3	57.6	65.0	63.5	67.6
05/15/18	0	0	54.2	52.0	67.3	50.2	64.3	54.3	54.7
05/25/18	0	0	66.6	58.5	61.3	52.3	65.8	69.8	57.7
06/05/18	0	0	61.7	62.3	66.3	59.6	69.0	60.3	61.5
06/07/18	2	1	<b>73.5</b>	<b>73.1</b>	64.3	59.8	69.6	61.0	60.7
06/08/18	3	1	<b>77.6</b>	69.5	70.3	60.2	<b>84.6</b>	<b>73.1</b>	68.8
06/14/18	1	1	62.0	63.7	68.7	69.2	70.7	59.2	<b>78.5</b>
06/15/18	3	1	<b>75.6</b>	<b>81.0</b>	67.0	65.7	<b>77.6</b>	65.5	65.8
06/16/18	1	1	66.7	<b>83.0</b>	60.3	55.3	70.8	57.7	59.7
06/17/18	1	1	60.1	61.6	67.5	52.1	<b>71.3</b>	65.0	54.8
06/28/18	1	1	54.0	59.8	57.1	<b>72.2</b>	68.0	52.7	55.2
07/11/18	0	0	55.2	60.0	62.6	69.3	59.6	54.6	57.6
07/12/18	0	0	61.7	63.0	57.2	68.3	63.2	52.6	56.8
07/13/18	5	1	62.6	<b>71.8</b>	<b>72.2</b>	<b>92.3</b>	<b>78.0</b>	62.8	<b>85.6</b>
07/14/18	4	1	<b>71.7</b>	<b>78.5</b>	<b>81.2</b>	65.5	<b>88.3</b>	69.6	61.2
08/10/18	1	1	60.3	48.0	69.1	45.2	<b>73.0</b>	58.2	56.0
09/14/18	1	1	60.3	57.1	<b>71.1</b>	67.7	68.1	69.1	68.8
<b>Total Exceeds</b>	23	11	4	5	3	2	6	1	2
<b>Truncated 4th Maximum</b>			71	73	70	69	77	69	68

Values in **BOLD/RED** exceed the level of the 2016 ozone standard of 70 ppb (parts-per-billion)

\* Indicates no data was available.

### 8-Hour Ozone Exceedances:

The National Ambient Air Quality Standard for ozone is measured as an 8-hour average. An ozone exceedance occurs when the highest 8-hour average for each day is greater than the NAAQS. The NAAQS was lowered from 80 ppb to 75 ppb in 2007 and from 75 ppb to 70 ppb in 2016. The data below lists the number of exceedances based on the NAAQS at the time the data was collected.

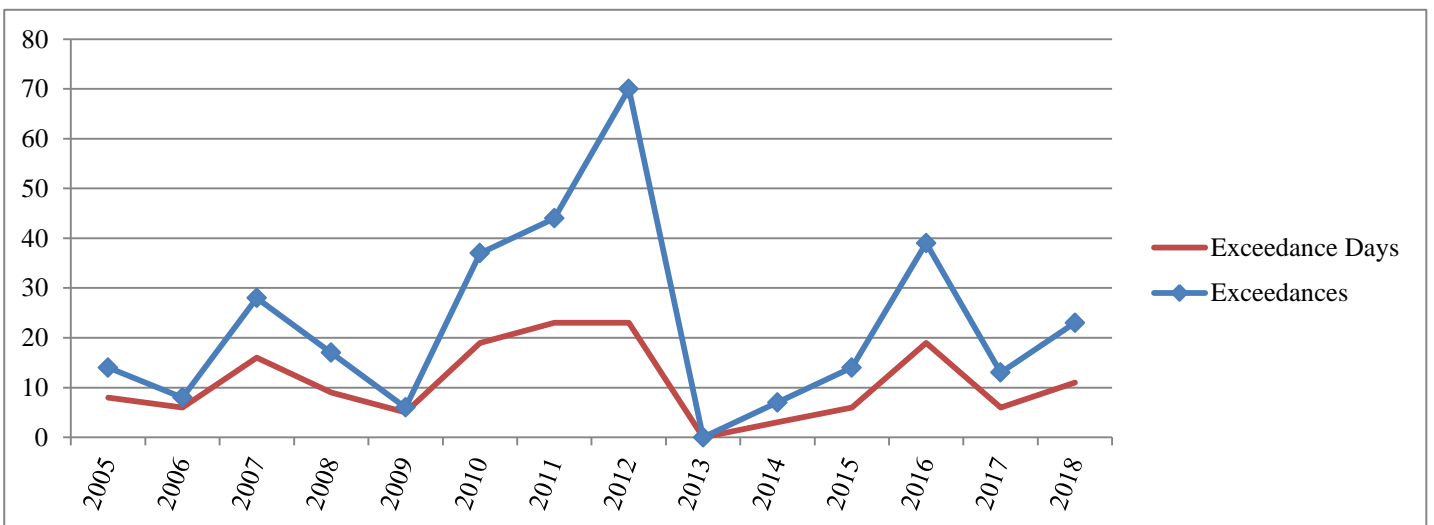
### 2005-2018 8-Hour Ozone Exceedance Summary through October 11th

Year	Charleston	New Albany	Bates & Carrithers	Watson	WLKY & Cannons Lane	Buckner	Shepherdsville	Louisville MSA Total		Jefferson County Total	
								Exceedances	Days	Exceedances	Days
2005	3	2	0	4	1	4	0	14	8	5	4
2006	3	1	0	1	0	3	0	8	6	1	1
2007	8	3	8	4	2	3	0	28	16	14	11
2008	3	3	2	2	1	4	2	17	9	5	5
2009	0	0	2	4	0	0	0	6	5	6	5
2010	4	2	3	3	15	8	2	37	19	21	15
2011	6	5	6	5	8	13	1	44	23	19	14
2012	8	13	7	11	13	14	4	70	23	31	17
2013	0	0	0	0	0	0	0	0	0	0	0
2014	1	2	0	2	2	0	0	7	3	4	3
2015	3	0	4	1	4	2	0	14	6	9	5
2016	7	6	5	3	14	3	1	39	19	22	16
2017	1	5	1	1	4	1	0	13	6	6	4
2018	4	5	3	2	6	1	2	23	11	11	8

\* Cannons Lane replaced WLKY in 2010. Data through 2009 are from WLKY.

\* Carrithers replaced Bates in 2018. Data through 2017 are from Bates.

### Historical Graph of 8-Hour Ozone Exceedances



## National Ambient Air Quality Standard for Ozone - 8-Hour Standard:

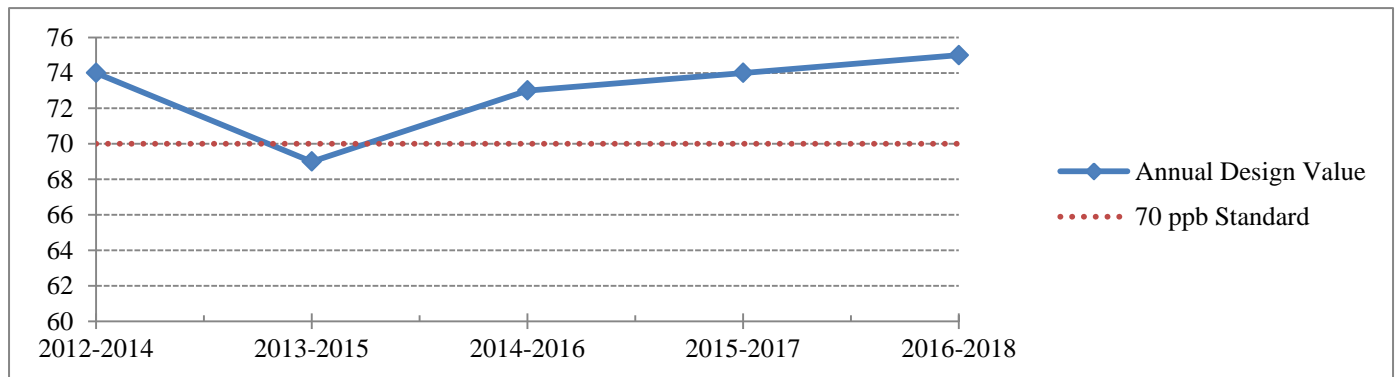
Attainment of the 8-hour standard for ozone at an individual monitor is achieved when the three-year average of the annual fourth-highest daily maximum (4<sup>th</sup> maximum) 8-hour average ozone concentration is less than 71 ppb. This three-year average is the design value for that monitor. The Louisville MSA row represents the largest 4<sup>th</sup> maximum and design value\* for all monitors within the MSA.

### 8-Hour Ozone 4<sup>th</sup> Maximums and Design Values through October 11th

Site Name	4 <sup>th</sup> Maximums							8-Hour Design Values				
	2012	2013	2014	2015	2016	2017	2018	2012-2014	2013-2015	2014-2016	2015-2017	2016-2018
Charlestown	85	67	66	74	73	68	71	72	<b>69</b>	71	71	71
New Albany	87	68	66	67	73	74	73	73	67	68	71	73
Bates/Carrithers	86	64	65	71	73	65	70	71	<b>66</b>	69	69	69
Watson Lane	81	65	69	69	70	66	69	71	67	69	68	68
Cannons Lane	90	64	68	76	76	72	77	<b>74</b>	<b>69</b>	<b>73</b>	<b>74</b>	<b>75</b>
Buckner	92	64	68	73	69	64	69	<b>74</b>	<b>68</b>	70	68	67
Shepherdsville	80	64	65	67	67	63	68	69	65	66	65	66
<b>Louisville MSA</b>	92	68	69	76	76	74	77	74	69	73	74	75

\* Design Value calculations are approximations based on preliminary summary data and may differ from official design value calculations

### 8-Hour Ozone Design Value Trend Chart



**Louisville Metro Air Pollution Control District**  
**Air Monitoring Report for Sulfur Dioxide (SO<sub>2</sub>)**  
**October 2018**

On June 2, 2010, EPA strengthened the primary National Ambient Air Quality Standard for SO<sub>2</sub>. Specifically, EPA replaced the existing annual (30 ppb) and 24-hour (140 ppb) primary standards with a new 1-hour standard set at 75 ppb. The 1-hour standard was set to better protect public health by reducing exposure to high short-term concentrations of SO<sub>2</sub>. The new standard took effect August 23, 2010.

**Exceedances of the 1-Hour SO<sub>2</sub> Standard:**

An exceedance occurs when a measured 1-hour average is greater than 75 ppb. Since up to twenty-four 1-hour averages are recorded each day, multiple exceedances may occur in one day. However, only the maximum 1-hour average (Daily Max) for each day is used in determining if the area is in compliance with the standard. The table below indicates the number of exceedances and the daily maximums reported thus far this year. The data are subject to further quality assurance checks and are not final.

**SO<sub>2</sub> Daily Maximums and Exceedances through September 30th**

Date	Fire Arms Training		Watson Lane Elementary		Cannons Lane NCore		New Albany Indiana	
	Exceeds	Daily Max	Exceeds	Daily Max	Exceeds	Daily Max	Exceeds	Daily Max
01/02/18		3.0		2.9		2.0		5.7
01/03/18		4.3		16.0		8.0		2.8
01/06/18		9.0		1.7		0.9		2.1
01/16/18		2.4		2.2		12.8		0.9
02/08/18		1.5		2.5		2.8		NA
02/15/18		1.3		4.8		1.6		0.1
02/19/18		1.7		3.0		0.1		4.3
02/27/18		5.1		2.3		0.5		1.0
03/06/18		2.8		4.5		1.0		1.0
03/09/18		2.5		3.6		6.3		2.3
03/23/18		1.7		10.3		1.4		2.5
04/11/18		2.6		4.0		1.3		3.0
04/17/18		2.3		3.0		4.4		NA
04/22/18		3.2		2.4		3.2		1.6
04/26/18		1.3		12.1		1.3		0.3
05/22/18		0.9		1.9		5.2		0.5
05/23/18		6.5		2.2		3.5		2.3
05/25/18		2.6		5.1		2.3		6.3
05/26/18		1.0		21.9		4.6		0.7
06/14/18		9.7		1.9		2.0		1.6
Totals/Max	0	17.8	0	24.3	0	12.8	0	34.8
99 <sup>th</sup> Percentile		9.7		18.8		8.0		6.3



**Attainment of the SO<sub>2</sub> Standard:**

Attainment of the new standard is achieved when the 3-year average of the 99<sup>th</sup> percentile annual distribution of the daily maxima is less than or equal to 75 ppb. Since this value can be calculated from historical data, the chart below indicates those values based on 2012-2018 data.

**SO<sub>2</sub> Annual 99<sup>th</sup> Percentiles and Annual Design Values**

Site Name	Annual 99 <sup>th</sup> Percentiles (ppb)							Annual Design Values				
	2012	2013	2014	2015	2016	2017	2018	2012-2014	2013-2015	2014-2016	2015-2017	2016-2018
Watson Lane	147	93	149	54	26	13	19	130	99	76	31	19
Fire Arms	35	37	42	25	16	8	10	38	35	28	16	11
Cannons Lane	31	27	29	19	8	7	8	29	25	19	11	8
New Albany	32	21	44	26	11	5	6	32	30	27	14	7